

UBC Centre for Migration Studies

Annual Report 2024-2025



THE UNIVERSITY OF BRITISH COLUMBIA
Centre for Migration Studies

[MIGRATION.UBC.CA](https://migration.ubc.ca)



Land Acknowledgement

The UBC Centre for Migration Studies (CMS) is located on the traditional, ancestral, and unceded territory of the x^wməθk^wəyəm (Musqueam) people. Our work also takes place across the unceded territories of the Sk̓wxwú7mesh (Squamish), səlilwətaʔɬ (Tsleil-Waututh), and other Coast Salish Nations in what is commonly known as Metro Vancouver. The vast diversity of Indigenous peoples includes differences in their perspectives, representation, needs, and aspirations. We honour the original Nations who care for these lands, waters, and skies as they have since time immemorial.

We also acknowledge that the Centre operates within a colonial institution, and the disciplines in which we work have often contributed to the erasure of Indigenous sovereignty and knowledge systems. As Coast Salish peoples continue to revitalize their cultures, languages, and lands, we—as migration scholars living and working on these lands—have a responsibility to support this critical work through our scholarship and actions.

Over the past year, CMS has taken steps to reflect more critically on these responsibilities. We recognize, however, that much more remains to be done. This land acknowledgement is not a conclusion. It is part of an ongoing conversation and a commitment to listening, reflecting, and acting in support of Indigenous self-determination and justice.

Cover image:
'Placemat' of belonging by Aaniya Asrani, part of the *Weaving Belonging: Stories from Unceded Territories* exhibition from the CMS *Belonging in Unceded Territory* project. Photo by Thomas Jose.

Table of Contents

01	Message from the Co-Directors	4
-----------	--	---

02	CMS by the numbers	6
-----------	---------------------------------	---

03	Highlights of the Year	
-----------	-------------------------------	--

Graduate Certificate in Migration Studies	7
---	---

Weaving Belonging: Stories from Unceded Territories	8
---	---

Research Groups	10
-----------------------	----

Speaker Series	13
----------------------	----

CMS-Sector Research Collaborations Day 2024	14
---	----

<i>Migration Insights Series</i>	16
--	----

Migrant Integration in the Mid 21st Century: Bridging Divides Research Program	17
--	----

International Art Competition 2024-25	19
---	----

CMS Annual Research Conference 2025	20
---	----

MEMO Research Project	22
-----------------------------	----

04	About CMS	
-----------	------------------	--

Governance	23
------------------	----

Human Resources	25
-----------------------	----

Financial Resources	27
---------------------------	----

05	Further Information	
-----------	----------------------------	--

Appendix A: Funding and Support	29
---------------------------------------	----

Appendix B: CMS Affiliation and CMS Affiliates	31
--	----

Appendix C: Units Represented by CMS Affiliates	38
---	----

Appendix D: Community and Institutional Partners	39
--	----

Appendix E: Research Publications and Achievements	40
---	----

Appendix F: Media Coverage	47
----------------------------------	----

Appendix G: Digital Engagement	49
--------------------------------------	----

Appendix H: Catalogue of Events	50
---------------------------------------	----

01

Message from the Co-Directors

This year has powerfully reaffirmed the importance of the work we do at the UBC Centre for Migration Studies (CMS). Around the world—and increasingly in Canada—immigrants face growing hostility. Populist and far-right forces stoke fear to justify harsh immigration restrictions and win political power. Asylum protections are being rolled back, resettlement pathways suspended, and public discourse too often reduces newcomers to scapegoats in debates over housing and social cohesion. Amid record levels of global displacement, legal pathways narrow, and walls—both literal and bureaucratic—grow higher. At UBC, pathways to permanent residence for current and recent international students have narrowed. Meanwhile, our community partners in the immigrant settlement sector have faced significant funding cuts.



In light of these global and national challenges, the Centre's continued growth and recognition have been especially meaningful. After a rigorous review by the Faculty of Arts, our centre status was reapproved for another five-year term. This decision reflects the university's confidence in the quality, relevance, and impact of our work. We also secured bridge funding from the Office of the Vice-President, Research and Innovation, whose early support helped launch CMS. As our work expands, so too does our team: we were delighted to welcome Tracey Mason as our new Operations Manager

and Maia Johl as a Program and Administrative Assistant.

At CMS, we are committed to producing rigorous, evidence-based research that counters misinformation, while also championing storytelling and creative practices that reframe how migration is perceived. Our new CMS *Migration Insights* Series shares peer-reviewed academic scholarship with the public in short, accessible summaries. We also celebrate artistic contributions that speak to the migrant experience—this year, *Running Home*, a photograph by Sinenkosi Msomi, won first prize in our International Art Competition. Changing minds requires facts; changing hearts requires imagination.

This past year was marked by major milestones in research, teaching, and public engagement. The Bridging Divides research initiative expanded, with seven researchers joining efforts to investigate migrant integration in Canada. We launched

the Graduate Certificate in Migration Studies, a unique program that provides graduate students with interdisciplinary scholarly training, while also elaborating non-academic career paths. CMS continued to be a hub for connecting researchers, practitioners, and the public. In November, the CMS-Sector Research Collaborations Day brought together scholars and community partners to discuss how to pursue decolonizing actions while navigating Eurocentric systems, and to explore possibilities for collaborative research. In May, our annual research conference brought together members of the UBC Vancouver and Okanagan campuses to discuss “Migration, Mobilities, and Changing Political Landscapes.” Throughout the year, our research groups met, invited guests, and engaged local communities.

Looking ahead, we are excited to release the 2025-30 CMS Strategic Plan, which will guide our priorities over the next five years. In September, we will host a one-day conference to examine the opportunities and problems of using new technologies to analyze discourses on migration. This fall will also bring a leadership transition: we will be saying goodbye to Gabriele Dumpys Woolever, the Centre’s Research Manager, who has tirelessly worked to build and support the Centre. At the same time, Prof. Suzanne Huot will step in as interim Co-Director for a 12-month term while Prof. Antje Ellermann is on research leave. Suzanne will work alongside Co-Director Prof. Irene Bloemraad, who marked her one-year anniversary at the Centre and UBC on July 1.

Our achievements were made possible through the generous support of our funders, partners, and collaborators, the incredible dedication and skill of our staff, and the contributions of all who have invested time, resources, and trust in CMS. As we look forward, we remain committed to advancing interdisciplinary research, creating space for diverse voices, and sharing knowledge that informs policy, enriches public understanding and supports more just and inclusive communities.



Photos by Kousaku Yui

IRENE BLOEMRAAD & ANTJE ELLERMANN

UBC Centre for Migration Studies Co-Directors

02

CMS by the numbers

42



Units
Represented



3

Active Research
Grants

SSHRC, GCRC, and CFREF

129



Faculty and
Postdoctoral Affiliates

104



Graduate Student
Affiliates

34



Lower Mainland Affiliates
& Visiting Scholars



7

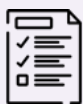
Active Community Partners

7



Research Groups

4



Migration
Insights Briefs

6



Graduate Students
Employed

5



Active Academic
Partners



24

Events
Hosted

15

Co-Sponsored
Events

03

Highlights of the Year

Launch of the Graduate Certificate in Migration Studies

The 2024-25 academic year marked a major milestone for CMS with the successful launch of the Graduate Certificate in Migration Studies. After years of consultation and development, we were proud to welcome the program's inaugural cohort of eight students from six different UBC departments.

The 2024-25 cohort included: **Adam Arca** (Master's student, School of Population and Public Health), **Caroline Armstrong** (Master's Student, Ancient Mediterranean and Near Eastern Studies), **Róisín Cahill** (Master's Student, Political Science), **Behtash JavidSharifi** (PhD Candidate, Civil Engineering), **Carlos M-Castro** (Master's Student, French, Hispanic and Italian Studies), **Dhriti Mehta** (PhD Student, Political Science), **Alix Mintha** (Master's Student, Anthropology), and **Asya Savelyeva** (Master's Student, Anthropology). The wide range of disciplines represented reflects the Certificate's interdisciplinary foundation and its commitment to fostering a dynamic, collaborative learning environment.

At its core is ASTU 505, a year-long, workshop-based seminar co-taught by CMS Co-Directors. The course builds interdisciplinary knowledge, supports professional growth, and fosters engagement with decolonial perspectives. To complement ASTU 505, students selected from nine approved electives across departments—including Geography, Ancient Mediterranean and Near Eastern Studies, Journalism and Media Studies, German Studies, Law, Political Science, and Spanish—enabling them to tailor the Certificate to their interests and disciplinary training.

This year, ASTU 505 deepened its focus on decolonial perspectives with a powerful session led by Elder **Norm Leech**, Executive Director of Frog Hollow Neighbourhood House. Drawing on his St'at'imc leadership and experience, he guided students through Indigenous views on local history, belonging, and the work needed to challenge colonial systems—fostering a reflective, place-based approach to migration studies.

Students participated in Professional Development Events highlighting diverse career paths for migration experts including roles in government, non-profits, and the private sector. Featured speakers included **Patrick MacKenzie**, CEO of Immigrant Employment Council of BC (IEC-BC), **Zahra Esmail**, CEO of Vantage Point, and **Lily Grewal**, Director of Immigrant Integration at the Government of British Columbia. These sessions helped students apply their academic training to real-world skills and career opportunities.

"It's deepened my understanding of migration beyond my disciplinary training and has introduced me to new research tools and methods. Most importantly, it has connected me with a community of peers and mentors at UBC who will undoubtedly continue to shape how I think about my research and its real-world implications."

Dhriti Mehta, PhD student in Political Science, 2024-25

Knowledge mobilization: exhibitions of

Weaving Belonging: Stories from Unceded Territories

From July 22 to August 1, 2024, interdisciplinary artist **Aaniya Asrani** presented her exhibition *Weaving Belonging: Stories from Unceded Territories* at the Clinton Park Field House. This community-oriented project was part of the broader CMS *Belonging in Unceded Territory* research project, which foregrounds the role of settler colonialism in shaping understandings of social belonging in Vancouver. Rooted in place-based storytelling, the exhibition invited reflection on how individuals from various backgrounds and positionalities relate to land, identity, and community on the unceded territories of the Musqueam, Squamish, and Tsleil-Waututh Nations.

The event series opened with a storytelling workshop, where attendees listened to recorded narratives gathered by Asrani and were invited to share their own experiences of belonging in Vancouver. Participants then collaborated in a collective weaving activity, creating a large woven placemat that visually represented the entanglement of diverse identities, journeys, and perspectives. The act of weaving became a metaphor for the complex and shifting nature of belonging that is shaped by one's positionality, relationships to land and community, and evolving understandings over time.

The exhibition emerged from dialogue sessions Asrani facilitated at the Immigrant Services Society of BC (ISSofBC), where she engaged with newcomers and long-time residents to explore their senses of place and identity. These conversations informed a series of recorded stories featured in the installation, shared by contributors including **Chief Janice George, Elmir Ismayilov, Gloria Tsui, Willard 'Buddy' Joseph, Valentyna Voloshko, Sussan Yáñez, and Antje Ellermann.**

Weaving Belonging concluded with a closing reception on August 1, where community members gathered to reflect on the stories, the collaborative art piece, and the connections forged throughout the project. The event underscored the exhibition's central message: that belonging is not fixed, but dynamic—continually reshaped through dialogue, memory, and shared experiences.

This project exemplifies CMS's commitment to fostering dialogue at the intersections of migration, identity, and reconciliation, while emphasizing the importance of grounding conversations in Indigenous histories and presence. It was made possible through the support of the UBC Centre for Migration Studies, the Canada First Research Excellence Fund, Migrant Integration in the Mid-21st Century: Bridging Divides, the Social Sciences and Humanities Research Council (SSHRC), STEPS Public Art, and Frog Hollow Neighbourhood House.

Weaving Belonging was also featured in the Field Guides Exhibition at the Roundhouse from September 27 to October 6, 2025, and at the Liu Lobby Gallery from May 1 to July 10, 2025.

LISTEN TO THE STORIES





Photos by Thomas Jose and Si Ming

Highlights from our Research Groups

CMS research groups bring together affiliates—faculty, students, and community partners—around key themes in migration studies. Proposed by affiliates and approved by the Executive Committee, each group receives CMS support through funding, promotional efforts, and administrative assistance. Coordinators also serve on the Executive Committee, helping shape the Centre’s direction.

BORDERS

The Borders Research Group includes 35 members from 13 disciplines. It aims to advance interdisciplinary dialogues about border regimes and the lived experience of borders through reading seminars, speaker events, and written and creative expression. The group seeks to expand its understanding of the many ways borders can be conceptualized: as physical spaces that monitor, manage, and limit human mobility; as a set of bureaucratic practices and logics; and as historical formations that are deeply entangled with colonialism and empire in all of its forms. It values the work of artists, community leaders, community activists, and advocates in amplifying critical analyses of bordering practices today. In 2024-25, the group was co-led by **Helena Zeweri** (Assistant Professor, Anthropology) and **Nikhita Obeegadoo** (Assistant Professor, Language and World Literatures, UBC-Okanagan).

HIGHLIGHT OF THE YEAR | On February 28, 2025, Dr. **Sharon Quinsa** (Grinnell College) gave a talk titled "Insurgent Communities: How Protests Create a Filipino Diaspora", also the title of her 2024 book. She explored how diasporas are politically constructed through Filipino experiences in the U.S. and the Netherlands,



highlighting how resistance builds collective memory and shapes insurgent communities in times of change.

CIRCULATION: AFRICA AND ITS DIASPORAS

The Circulation: Africa and its Diasporas Research Group included 7 faculty and graduate students from 6 disciplines. It focused on migration to/from/on the African continent, and on the resulting circulation of objects, languages, and ideas between the continent and its diasporas in Asia, the Americas, and Europe. The group aimed to foster a scholarly community for collaborative research, publications, and grant proposals while engaging with community partners in Vancouver. Additionally, it sought to enhance the visibility and relevance of African (Migration) Studies and African Diaspora Studies at UBC, ultimately contributing to a sustainable institutional structure for these fields. In 2024-25, the group was co-led by **Antje Ziethen** (Associate Professor, French, Hispanic, & Italian Studies), and **Calisto Mudzingwa** (Sessional Lecturer, Linguistics and African Studies). The research group ceased its activities at the end of the 2025-26 academic year.

HIGHLIGHT OF THE YEAR | On September 19, 2025, Dr. **Cécile Accilien** gave a talk titled "Re-Framing Disaster Narratives around Haiti", challenging simplistic portrayals of Haiti by offering historical and cultural context. She examined how various forms of *ensekirite*—alongside colorism, gender, class, and ineffective aid—reinforce crisis narratives. A conversation with Dr. **Victoriano-Martinez** (UBC) followed, addressing Haiti–Dominican Republic tensions. The event was co-sponsored by UBC’s Latin American Landscapes Cluster.

CLIMATE MIGRATION

The new Climate Migration Research Group was launched in December 2024. It brings together 18

members from 11 disciplines to address the complex and multifaceted challenges posed by climate-induced migration. As global climate change continues to reshape migration patterns, the group emphasizes the importance of advancing comprehensive research, informed policy analysis, and effective community engagement. By fostering interdisciplinary collaboration, producing impactful research, and driving meaningful policy advocacy, it aims to build a robust foundation for addressing this critical global issue. In 2024-25, the group was led by **Jemima Nomunume Baada** (Assistant Professor of Geography).

HIGHLIGHT OF THE YEAR | The Climate Migration Research Group participated in a speed networking session as part of the CMS-Sector Research Collaborations Day held on November 13, 2024. This speed networking event served as an opportunity to share information about the newly created group, and to connect with potential collaborators across academic and non-academic sectors. Many of these connections have since become affiliated members of the group.

MIGRATION AND INDIGENEITY

The Migration and Indigeneity Research Group is home to 18 members from 11 disciplines and is committed to advancing the Indigenization of migration studies, both through teaching and research. The research group explores the intersection of migration studies and Indigeneity through reading, discussing, teaching, writing, and engaging in dialogue with scholars and activists. Areas of research focus include settler colonialism and decolonization; borders and sovereignty; and Indigenous Studies. In 2024-25, the group was led by **Ayaka Yoshimizu** (Associate Professor in Asian Studies).

HIGHLIGHT OF THE YEAR | On September 9, 2025, students, faculty, and CMS staff participated in a field trip to Whey-ah-Wichen (Cates Park), an ancestral Tsleil-Waututh village site in North Vancouver. Guided by **Seth George** and **Trevor Jack** (Snuneymuxw First Nation) of Takaya Tours, participants paddled a replica ocean-going canoe through Burrard Inlet, learning

about the hə́ŋqəmiŋə́ place name, traditional canoes, and the cultural significance of a nearby shell midden. The experience offered a powerful reflection on Tsleil-Waututh history, presence, and the shared responsibility of living respectfully on Indigenous land.

MOBILITIES

The Mobilities Research Group includes 26 members from 11 disciplines. The group aims to produce new lines of inquiry within mobility analysis through humanistic, interpretive, multilingual, culturally sensitive scholarship on multiple and intersecting mobilities from both the humanities and social sciences. By addressing the complex mediums and meanings of mobilities and immobilities, the group foregrounds mobility within cultural, historical, media, and literary studies of the circulation of humans, objects, ideas, and images. Research areas include topics such as climate migration; gender and migration; digital and media studies; diasporas and transnationalism; and history of migration. In 2024-25, the group was co-led by **Megan Daniels** (Assistant Professor, Ancient Mediterranean & Near Eastern Studies) and **Gaoheng Zhang** (Associate Professor, Department of French, Hispanic and Italian Studies).

HIGHLIGHT OF THE YEAR | On November 27, 2024, Dr. **Monica Liu** presented “Why Do Chinese Women Seek Western Men? The Case of China’s Email-Order Brides,” co-organized by the CMS Mobilities Research Group and UBC Asian Studies. Drawing on 17 months of ethnographic fieldwork in southern China, she examined how class, gender, and China’s shift to a market economy shape women’s motivations to migrate through marriage. The talk underscored the need for intersectional approaches to global dating and migration studies.

NARRATIVES

The Narratives Research Group brings together 23 members from 15 disciplines to explore narratives of migration, belonging, and the politics of identity. By examining settler, migrant, refugee, and Indigenous

stories in literature, film, and media, the group challenges Eurocentric ideas of settlement and identity. Their work questions binaries and place-based concepts like integration, hybridity, and belonging to promote decolonized understandings of social inclusion. A key focus is on transformative aesthetics that shift political perspectives and challenge dominant narratives in plural societies. In 2024-25, the group was led by **Elizabeth “Biz” Nijdam** (Assistant Professor of Teaching in Central, Eastern, and Northern European Studies).



HIGHLIGHT OF THE YEAR |

Cosponsored by the CMS Narratives Group, the “Remember” Comics Project is an ongoing collaboration between Education without Borders, the UBC Comics Studies Cluster (CSC), Homalco journalist and media personality **Tchadas Leo**, and the Homalco First Nation. It paired Indigenous

cartoonists **Alina Pete, Gord Hill, and Valen Onstine** with archival recordings from the “Remember” Podcast to develop three short comics about the traditional knowledge and cultural practices of the Homalco First Nation. In November 2024, project collaborators celebrated the release of *Xwemalhkwa Hero Stories* (2024) in Campbell River with the Homalco First Nation.

POLITICAL MEMBERSHIP

The Political Membership Research Group (formerly “Political Behaviour”) focuses on how and when immigrant “others” become recognized as members of the political community. Using a diverse array of methodologies, it examines the identities, attitudes, claims-making processes, and political behaviours that shape this journey. Their research seeks to uncover the circumstances and factors that influence political inclusion and belonging. In 2024-25, the group was co-led by **Irene Bloemraad** (CMS Co-Director and Professor of Political Science & Sociology) and **Matthew Wright** (Associate Professor, Political Science).



Photos by Kousaku Yui

Exploring Migration, Racialization, and Inequality: Speaker Series

Amid growing anti-immigration narratives, the 2024-25 CMS Speaker Series, "Migration, Racialization and Inequality," featured four leading scholars who explored how racialization shapes systemic inequality and migrant resistance. The four speakers explored the intersection of race and migration, fostering critical dialogue within the CMS community. This year also saw a notable rise in in-person attendance, alongside the adoption of a hybrid format.

Associate Professor of Political Science, University of Florida, **Andrew S. Rosenberg** opened the series with his lecture titled "Shades of Perception: Non-White Refugee Arrivals and Migration Policy Restrictiveness in Global North". By contrasting the responses of those fleeing the Syrian civil war and the 2022 Russian invasion, his research showcases how racial prejudice influences policy restrictiveness and public opinion. His lecture also explored how the anti-immigrant narratives rooted in racial bias propagated by the media in the Global North towards non-white refugee arrivals further amplify these responses and maintain the global order of racial hegemony.

In October, **Jean Beaman**, Associate Professor of Sociology at the University of California Santa Barbara and City University of New York, gave a talk titled "Suspect Citizenship: Rethinking Belonging and Non-Belonging in Plural Societies". In her lecture, she introduced the phrase "suspect citizenship" to demonstrate how ethno-racial minorities are constantly outside of the boundaries of full societal inclusion. Presenting her years of ethnographic research on France's anti-racism movements and police violence related protests, Prof. Beaman showcased how the ethno-racial categories become critical in constructing national identity and citizenship in postcolonial plural societies.

The third lecture in the series was presented by Associate Professor of Sociology at Northwestern University, **Jennifer A. Jones**. She explored the role of immigrant serving organizations in shaping racial formation processes. By conducting research on 14 organizations based across the Southern US, she categorized the mobilization of race into four organizational racial frameworks. This helped showcase how an organization's work and messaging position it within the spectrum of either accepting or challenging the hegemonic racial order, and how this relates to both inward and outward change. Focusing on two frameworks, Prof. Jones pointed to the fact that organizations play a key role in immigration politics, affecting both the racialization of new arrivals and macro-level public policies.

The speaker series concluded with Associate Professor of History, Carleton University, **Laura Madokoro's** lecture titled "'Otherness' and the Politics of Sanctuary: Exploring the History of Refuge Over the Long Twentieth Century". Drawing from her book, *Sanctuary in Pieces: Two Centuries of Flight, Fugitivity and Resistance in a North American City*, she presented an exploration of the politics of otherness as seen in the search, offer, and refusal of sanctuary. By presenting the different types of sanctuary cities, Prof. Madokoro provided a nuanced representation of its conception and the politics of access from an historical perspective.

Laying foundations for lasting collaborations: CMS-Sector Research Collaborations Day 2024

On November 13, 2024, CMS hosted the second annual CMS-Sector Research Collaborations Day in partnership with Affiliation of Multicultural Societies and Service Agencies of BC (AMSSA). This year’s gathering focused on critically examining the roles that academic and settlement organizations play in the work of decolonization, and marked the beginning of more intentional connections between CMS affiliates and sector practitioners through the sharing of research interests.

The morning session featured a public panel discussion with three speakers who brought diverse perspectives to the table: **Atlanta-Marinna Grant**, UBC graduate and Social Policy Analyst at the City of Vancouver; Dr. **Harald Bauder**, Professor of Geography and Immigration and Settlement Studies at Toronto Metropolitan University; and Dr. **Sandeep Agrawal**, Professor and Associate Dean at the University of Alberta. The panel focused on internal organizational questions and the structural shifts required for meaningful engagement with decolonization in both academia and the settlement sector. Notably, the discussion revisited key questions from last year’s Research Collaborations Day, focusing on roles and reasoning within the ‘Indigenization-decolonization’ relationship.

The panel was followed by a research presentation by **Caitlin Chong**, graduate student in Sociology, and Dr. **Amanda Cheong**, Assistant Professor of Sociology, titled “Language Accessibility & the Healthcare-Seeking Experiences of Low-Income Chinese Seniors in Vancouver.” Dr. **Irene Bloemraad**, Professor of Political Science and Sociology and CMS Co-Director, then presented an update on the progress of the CMS-Sector Collaboration Framework.

While last year’s event focused on building mutual understanding, this year introduced an interactive

component: a speed networking session. The afternoon session brought together seven CMS affiliates and rotating small groups of sector practitioners for focused conversations on research interests. Designed to spark connections around shared concerns and questions, the session laid the groundwork for deeper collaboration. Building on this momentum, CMS plans to develop a searchable database and a protocol for community engagement. These tools are intended to support the development of sustained relationships and help create space for collaborations to emerge organically and meaningfully from these exchanges.

70+
Attendees

55
Immigration and
Settlement Sector
Professionals

13
Immigration
and Settlement
Organizations

2
Presentations
from CMS

1
Panel
Discussion

7
Speed Networking
Tables

LECTOR RESEARCH COLLABORATIONS DAY 20

SITY OF BRITISH
ation Studies



Photos by Kousaku Yui

Launch of the *Migration Insights Series*

In 2024-25, CMS launched the *Migration Insights* Series, a new initiative designed to translate academic research into accessible, public-facing knowledge. Each brief summarizes key findings from CMS affiliates in three jargon-free pages, with clear visuals and practical takeaways. The series supports public understanding, informed media coverage, and evidence-based policymaking at a time when trustworthy information on migration is urgently needed. By cutting through today's crowded media landscape, it helps foster more thoughtful and informed public dialogue.

In its first year, CMS published four research briefs:

- **Beyond Political Polarization: Finding Common Ground on Immigration in the United States**

Prof. Matthew Wright

Research brief prepared by Nadia Almasalkhi

- **Statelessness by Design: Myanmar's Bureaucratic Methods of Erasing the Rohingya**

Prof. Amanda Cheong

Research brief prepared by Nadia Almasalkhi

- **Making Health Disparities Visible: The MENA Category and COVID-19**

Prof. Neda Maghbouleh

Research brief prepared by Nadia Almasalkhi

- **From Classroom to Citizenship: Higher Education's Role in Migration Policy**

Dr. Lisa Ruth Brunner

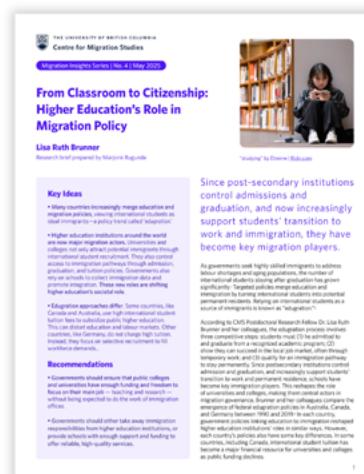
Research brief prepared by Marjorie Rugunda

The series also offers meaningful training opportunities for students, who gain hands-on experience in translating complex academic research into clear, accessible writing for a broad audience. Paid graduate students play a key role in developing each brief,

improving communication skills that are increasingly valuable across careers in academia, policy, and the non-profit sector. This year, four graduate students contributed to the writing of the briefs as Graduate Academic Assistants: **Nadia Almasalkhi** (PhD candidate, Sociology, University of California, Berkeley), **Capri Kong** (Master's student, Sociology, UBC), **Marjorie Rugunda** (Doctoral student, Institute for Gender, Race, Sexuality & Social Justice, UBC), and **Peter Zhang** (Doctoral student, History, UBC).

"As Editorial GAA, I've helped shape complex migration research into accessible writing, highlighting the importance of making academic work available to wider audiences, especially as CMS affiliates challenge dominant ideas and offer nuanced perspectives on migration today."

Marjorie Rugunda, Doctoral student, Institute for Gender, Race, Sexuality & Social Justice, UBC



READ THE BRIEFS



Progress in the Migrant Integration in the Mid 21st Century: Bridging Divides Research Program



In 2024–25, researchers involved in the **Migrant Integration in the Mid 21st Century: Bridging Divides** research program continued building their teams by recruiting postdoctoral fellows and graduate students and further shaped their research projects. CMS also reached its full staffing capacity to support the program's extensive administrative needs.

Several UBC core research team members were featured in the inaugural issue of *Bridges Magazine*, a new publication showcasing community-driven, partnership-informed research—including CMS's work on citizenship, belonging, and the changing world of work. In May 2025, students from UBC, TMU, the University of Alberta, and Concordia participated in the Migration Data Challenge 2025, a Bridging Divides competition exploring the intersection of migration, data, and policy.

Seven new researchers from UBC Vancouver and UBC Okanagan were awarded funding for one year. The Bridging Divides research team now includes the following annual members: Dr. **Julia Harten** (Assistant Professor, School of Community and Regional Planning, UBCV), Dr. **Annamma Joy** (Professor, Faculty of Management, UBCO), Dr. **Anusha Kassin** (Associate Professor, Educational Studies, UBCO), Dr. **Xiaojun Li** (Associate Professor, Political Science, UBCV), Dr. **Yue Qian** (Professor, Sociology, UBCV), Dr. **Annie Wan** (Associate Professor, Creative Studies, UBCO), and Dr. **Ying Zhu** (Associate Professor, Faculty of Management, UBCO).

ANNUAL RESEARCHER PROJECTS

Leveraging Machine Learning to Study Immigrant Renting via Online Advertisements in Vancouver

Lead: Julia Harten

Mirroring global trends, a growing share of immigrants to Canada are renting, but the evidence landscape on immigrant renting is patchy at best. Rental markets in general present unique research challenges, making it difficult to get an accurate reading of rental housing activity. Recent studies have leveraged online rental listings for new insights, but the vast majority consider dominant-language platforms only. In places with substantial immigrant communities, such as many Canadian cities, this narrow focus is highly problematic. To address this gap, Harten examines Vancouver's rental market using online listings from two platforms, one English, and one Chinese.

AI Empowerment Initiative: Bridging Immigrants with Small and Medium-sized Enterprises (SMEs) and Nonprofits through Tailored AI Training Programs

Lead: Annamma Joy

This research addresses the challenges immigrants in Canada face regarding digital skill development and employability within the context of economic digital transformation. As artificial intelligence (AI) becomes integral to economic activities, digital literacy among immigrant populations is crucial for equitable workforce integration and national competitiveness. Joy's central research question is: How can tailored AI literacy and skills training for immigrants enhance their employability within Canadian SMEs and nonprofits, and contribute to Canada's digital transformation?

Evaluating the Effectiveness of Advanced Digital Technologies to Support Immigrant Professionals' Integration into the Canadian Labour Market

Lead: Anusha Kassan

This research investigates the effectiveness of advanced digital technologies (ADT) in supporting the labour market integration of immigrant professionals in Canada, focusing on two case studies of digital tools—one powered by AI and one not powered by AI. The overarching goal of this study is to evaluate the effectiveness of ADT in supporting the labour market integration of immigrant professionals in Canada.

From Great Firewall to Global Connections: Dual Digital Platforms, Identity, and Integration Among Chinese Immigrants in Canada

Lead: Xiaojun Li

This study investigates the impact of digital communication tools, particularly the continued use of Chinese origin platforms like WeChat and the adoption of mainstream Canadian platforms, on the integration of Chinese immigrants into Canadian society. More specifically, the research asks how Chinese platforms like WeChat shape Chinese Canadians' views on identity, belonging, and politics, including Canada-China relations. It also explores their responses to Canadian digital platforms and considers how these findings may apply to similar immigrant groups in comparable global contexts.

Online Dating in Canada: An Immigrant-Native Born Comparison

Lead: Yue Qian

When talking about settlement and integration, we often focus on helping immigrants get jobs, but what about their needs for love and companionship? Forming a satisfying intimate relationship benefits immigrants' mental and physical health, sense of belonging, and social integration in the host society. As digital technologies penetrate people's lives, online dating has become a primary way couples meet. This project collects original data from a large-scale national survey

to investigate the use and implications of online dating in Canada, with a focus on the immigrant-native born comparison.

Humanizing Technologies: A Survival Toolkit Navigating the Artificial Intelligence Era in Migration Studies

Lead: Annie Wan

This interdisciplinary project leverages mixed reality (MR), artificial intelligence (AI), migrants' oral histories, and qualitative research to develop innovative solutions for multifaceted challenges faced by first- and second-generation immigrants. These challenges include cultural differences, generation gaps, communication barriers, career struggles, family dynamics, and mental well-being. The research focuses on enhancing cultural resilience and fostering stronger connections among different generations within migrant communities.

Digital Place, Belonging, and Infrastructure: Leveraging Technology-Enabled Intergenerational Homesharing to Strengthen Immigrant Integration in Canada

Lead: Ying Zhu

This research tackles the major challenges faced by permanent and temporary immigrants in securing safe and affordable housing, compounded by language and cultural barriers that hinder their social integration. An effective and promising solution is homesharing, which pairs those seeking affordable housing with people who have empty rooms. Canada HomeShare (CHS), the only non-profit homesharing program in Canada, has embraced this innovative approach by offering a technology-enhanced intergenerational housing program. Prof. Zhu examines how digital tools can enhance this intergenerational model to address housing challenges, ageism, and social isolation.

Celebrating creativity: International Art Competition 2024-25

First launched in early 2021, the CMS International Art Competition is part of an effort to open a conversation with established and emerging artists on topics of migration and mobility. We believe that artists and artwork play a vital role in fostering our understanding of migration and mobility (broadly understood), as well as in shaping the public narratives around this critical aspect of everyday human life and history. Open to all, the competition offers cash prizes across multiple categories.



First Prize: Sinenkosi Msomi, *Running Home*, 2022

This year, the CMS International Art Competition was co-organized by the CMS Mobilities, Narratives, and Circulation: Africa and its Diasporas Research Groups, and headed by Dr. **Gaoheng Zhang** (Department of French, Hispanic, and Italian Studies). Centered on the theme “African diasporas, migrations, and mobilities,” the competition invited artists to reflect on the rich and complex histories, cultures, and experiences shaped by the movement of African peoples—whether voluntary or forced—across time and space. Submissions explored both historical and contemporary perspectives on African mobility and its global impact.

CMS awarded the First Prize to **Sinenkosi Msomi** for his photograph, *Running Home* (2022). The Second prize was awarded to **Moses Ojo** for his digital artwork, *Burdened* (2025), while the Jury Prize was presented to **Dani Beyene** for her self-portrait diptych *Meskel* (2024).

"Running Home speaks to the emotional and psychological weight migrants carry, the severing of roots, and the longing for a new home. It emphasizes the strength of the human spirit, the enduring hope that drives migration, and the belief that despite adversity, a better future lies ahead."

Sinenkosi Msomi, First Prize in the International Art Competition 2024-25

Collaborative and interdisciplinary research: Annual Research Conference 2025

On May 1-2, 2025, CMS hosted its third annual Research Conference in partnership with UBC Okanagan. This year’s theme, “Migration, Mobilities, and Changing Political Landscapes”, explored how shifting political environments shape migration flows, governance, and lived experiences across global and local contexts. Bringing together scholars, students, and practitioners, the two-day event fostered dynamic dialogue on the complex realities of migration, mobility, and belonging..

The conference featured five thematic panels and a policy roundtable, offering interdisciplinary insights and research grounded in both theory and practice. Twenty-two presenters from diverse disciplines addressed pressing issues such as climate-driven displacement, digital pedagogy, racialization, precarious mobilities, and policy engagement. Discussions spanned a wide range of topics, including the role of technology and digital education in addressing migration-related challenges; the intersections of displacement and human agency; and how migrants navigate systemic barriers through social networks and digital tools. Presentations also examined how bureaucratic processes and stereotypes reinforce marginalization, and how precarious conditions affect experiences of belonging, home-making, and identity.

The conference concluded with a roundtable convening government representatives and UBC scholars to explore strategies for increasing the impact of academic research on policy-making. The discussion emphasized the importance of connecting scholarly knowledge with public agendas to foster meaningful change.

The Conference featured keynote event WhereWeStand (WWS), a national multimedia storytelling initiative that pairs Indigenous individuals with non-Indigenous newcomers to co-create works that deconstruct Canada’s colonial legacy and reimagine relationships

with the land and its peoples. CMS partnered with the Canada Excellence Research Chair in Migration and Integration (CERC Migration) at Toronto Metropolitan University to present five collaborative works through varied modalities. Facilitated by WWS Creative Producer and CERC Migration Research Fellow Dr. **Cyrus Sundar Singh**, the event featured contributions from **Andrea Baedak, Aaron McKay, Deyowidron’t Teri Morrow, Poornima Francis, and Izzeddin Hawamda**. The WWS team showcased the power of collaboration, (un) learning, and shared storytelling in envisioning liberated, just, and hopeful futures.

83

Attendees

5

Presentation
Panels

31

Panelists

18

UBC Departments
Represented

Weaving Belonging

Art Exhibition

WhereWeStand

Keynote
Presentation

Making Research
Matter

Publishing Panel



Photos by Kousaku Yui

Progress on the MEMO Research Project

PROJECT TITLE: Complex Migration Flows and Multiple Drivers in Comparative Perspective

FUNDER: SSHRC (Social Sciences and Humanities Research Council) Partnership Grant

PROJECT LEAD: CERC Migration and Integration Program, Toronto Metropolitan University

CMS TEAM: Dr. **Suzanne Huot** (Principal Investigator) and **Astou Thiam** (Research Assistant)

STATUS: Data collection completed in Metro Vancouver, analysis ongoing

The MEMO project is an international research initiative that aims to **deepen understanding of what drives migration and how to support migrants through more inclusive and rights-based policy**. Rather than treating different migration drivers, such as conflict, climate change, or economic hardship, MEMO adopts a broad socio-ecological systems approach. This framework recognizes the complexity of migrant decision-making and seeks to connect various types of migration within an integrated analysis. The Canadian MEMO research team includes scholars in Montreal, Moncton, Quebec City, Toronto, Ottawa, and Vancouver. The CMS team represents the West Africa research hub.

Working with partners across 11 countries, MEMO focuses on three migration systems around the world, mapping multiple population corridors that span local to intercontinental scales. Researchers are developing new models to better understand how migration drivers interact and to translate their findings into tools for government and stakeholder use. These tools are designed to improve migration governance and contribute to more just, inclusive societies.

The Vancouver case study explores the experiences of West-Central African immigrants in Metro Vancouver, with a particular focus on hospitality—how newcomers are welcomed by the host society. The research uses a critical qualitative approach informed by intersectionality, social capital, and critical race theories, as well as the Senegalese concept of Teranga, which emphasizes hospitality, sharing, and community.

Through 43 in-depth interviews with immigrants from Nigeria, the Democratic Republic of the Congo, Ghana, Cameroon, Ivory Coast, and Senegal, researchers investigated the barriers and supports migrants face in daily life. Preliminary results show that many participants reported challenges such as cultural differences, exclusion, language-related discrimination, and difficulties navigating unfamiliar workplace cultures. They also identified structural barriers, including the devaluation of prior education and work experience, limited access to cultural foods, and Metro Vancouver's high cost of living. At the same time, participants noted positive aspects of their experience, including the kindness of residents and general acceptance of diverse religions. These expressions of welcome, however, were often inconsistent and did not fully counterbalance the structural and systemic barriers encountered.

Preliminary recommendations include improving the welcome system for newcomers, particularly in ways that promote meaningful interaction and hospitality within workplaces and community spaces. The study makes a significant contribution to understanding migration drivers and settlement experiences of West-Central Africans in Canada. It also offers valuable insights for migration and occupational science by emphasizing how cultural concepts of hospitality can support inclusion and transformative change.

The team presented preliminary findings at the 27th Metropolis Conference in March 2025 and will present a paper at the Occupational Science Europe conference in August 2025.

04 About CMS

Governance

The UBC Centre for Migration Studies is housed in the Faculty of Arts and is led by Co-Directors, Dr. **Irene Bloemraad** (Professor, Political Science and Sociology) and Dr. **Antje Ellermann** (Professor, Political Science), and an eighteen-member Executive Committee.

EXECUTIVE COMMITTEE

The composition of the Executive Committee reflects the broad interdisciplinary commitments and vision that are foundational to the Centre. The Executive Committee provides guidance for CMS decision-making on matters including strategic direction, compliance and accountability, and programs and initiatives. Executive Committee members also adjudicate

internal competitions for grants, awards, conference placements, and fellowships offered by CMS. CMS Governance Guidelines provide the terms and protocols of Executive Committee membership. At present, committee seats are allocated to faculty members from a wide range of departments, in addition to a Community Representative, and two Graduate Student Representatives.

In 2024-25, the Executive Committee included:

Atreyi Bhattacharjee (Allard School of Law, Graduate Student Representative); **Irene Bloemraad** (Professor, Political Science & Sociology); **Amanda Cheong** (Assistant Professor, Sociology); **Megan Daniels** (Assistant Professor, Ancient Mediterranean and Near Eastern Studies); **Katie Crocker** (CEO, Affiliation of Multicultural Societies and Service Agencies of BC - AMSSA), Community Representative) **Catherine**



Dauvergne (Professor, Allard School of Law); **Antje Ellermann** (Professor, Political Science); **Terri Givens** (Professor, Political Science); **Sean Lauer** (Professor, Sociology, Community Liaison); **Lennon Chido Mhishi** (Assistant Professor, Anthropology); **Elizabeth “Biz” Nijdam** (Assistant Professor, Central, Eastern, and Northern European Studies); **Geraldine Pratt** (Professor and Head, Geography); **Claudia Serrano** (Political Science, Graduate Student Representative); **Pasang Sherpa** (Assistant Professor, Institute for Critical Indigenous Studies; Department of Asian Studies); **Matthew Wright** (Associate Professor, Political Science); **Ayaka Yoshimizu** (Associate Professor, Asian Studies); **Helena Zeweri** (Assistant Professor, Anthropology); **Antje Ziethen** (Associate Professor, French, Hispanic, and Italian Studies).

Antje Ellermann (CMS Co-Director); **Lily Grewal** (BC Government, Immigrant Integration Vancouver); **Vince Hopkins** (UBC Political Science); **Vandna Joshi** (DIVERSEcity Community Resources Society); **Norm Leech** (Frog Hollow Neighbourhood House); **Jing Liu** (Chimo Community Services); **Calisto Mudzingwa** (S.U.C.C.E.S.S); **Elizabeth “Biz” Nijdam** (UBC Department of Central, Eastern, and Northern European Studies); **Javier Ojer**, (CMS Engagement Strategist); **Yusra Qadir** (Mothers Matter Centre); **Sandra Schinnerl** (CMS Postdoctoral Research Fellow); **Kathy Sherrell** (ISSofBC); **Sean Lauer** (UBC Sociology, EC Community Liaison); **Olga Stachova** (MOSAIC); **Antje Ziethen** (UBC Department of French, Hispanic and Italian Studies).

COMMUNITY ADVISORY BOARD (CAB)

The Community Advisory Board (CAB) provides a bridge between CMS, Metro Vancouver, and broader community entities in BC with an interest in research and other economic, political, and social issues surrounding migration. Meeting twice a year, the CAB functions as an auxiliary layer of governance for CMS, working with the Executive Committee to advise on research priorities in the region and on building productive partnerships between researchers and the community. This includes appropriate practices for managing fair and equitable research partnerships. CAB members now serve a renewable three-year term.

2024-25 CAB participants included:

Huda Bolbolan (South Vancouver Neighbourhood House); **Lisa Ruth Brunner** (CMS Postdoctoral Research Fellow); **Arvinder Bubber** (A.S. Bubber & Associates); **Anastasia Chyz-Lesage** (Immigration, Refugees and Citizenship Canada, Western Region); **Katie Crocker** (Affiliation of Multicultural Societies and Service Agencies of BC - AMSSA, EC Community Liaison); **Kat Cureton**, (UBC Community Engagement Network);

Human Resources

In 2024-25, CMS personnel grew further and now includes five full-time staff, one part-time staff, two postdoctoral fellows, and various Graduate Academic Assistants.



Atmaza Chattopadhyay
Events and Community Engagement
Support

During the first half of 2024-25, Atmaza Chattopadhyay continued to support event planning and coordination, marketing, and physical infrastructure. Formerly serving as Program and Administrative Assistant, their role now focuses on event planning and logistics, and community-engaged programming and initiatives.



Gabriele Dumpys Woolever
Research Manager, Programs and
Initiatives

Gabriele Dumpys Woolever continued as CMS's full-time Research Manager, Programs and Initiatives. Working closely with the Co-Directors, she oversees research projects, programming, grants, and budgets; manages the Graduate Certificate; and supports grant-writing.



Marie Frileux
Communications Specialist

Marie Frileux continued in her role as CMS's full-time Communications Specialist. She leads the creation, coordination, and implementation of CMS promotional materials, social media content, the Weekly Update, website news features and announcements, and the Annual Report. She also collaborates with Editorial GAAs on the development of the *Migration Insights* Series.



Maia Johl
Program and Administrative Assistant

Maia Johl joined CMS as the new Program and Administrative Assistant in October 2024. She provides financial and administrative support, assisting with budget development, expense processing, fiscal procedures, travel coordination, and human resources. She also supports the management of affiliate profiles and the Graduate Certificate program.



Tracey Mason
Operations Manager

Tracey Mason started this full-time position in June 2024. This role provides fiscal management and administrative leadership for the Centre, working with the Co-Directors and Research Manager to support and implement strategic planning, fiscal policies and procedures, budget development and forecasting, operations development and direction, human resourcing, and acquisition of supplies and equipment.



Javier Ojer
Engagement Strategist

Javier Ojer continued as part-time Engagement Strategist, working with individuals and organizations from across UBC and Metro Vancouver to explore ways in which community-university relationships can be deepened, decolonized, and more fruitfully re-imagined. He leads the annual CMS-Sector Research Collaborations Day and work closely with the CAB.

Two Postdoctoral Fellows continued on the Bridging Divides research program:



Lisa Ruth Brunner

CMS Postdoctoral Research Fellow and
AMSSA Public Policy Consultant

Dr. Lisa Ruth Brunner holds a full-time fellowship. She works on the Naturalization Ceremonies and Narratives of Citizenship Bridging Divides projects (PI: Prof. Antje Ellermann).



Sandra Schinnerl

CMS Postdoctoral Research Fellow and
Senior Economist, Immigration and
Integration Policy, Government of British
Columbia

Dr. Sandra Schinnerl holds a part-time fellowship. She works on the Individual and Structural Barriers to Citizenship Acquisition Bridging Divides project (PI: Prof. Vince Hopkins).

Various Graduate Administrative Assistants (GAAs) were employed throughout the academic year. **Ziwen Mei** (PhD Student, Language and Literacy Education), and **Chieh Lü** (PhD Candidate, Educational Studies) continued to support CMS events. **Kousaku Yui** (PhD Student, Philosophy) was CMS event photographer. **Capri Kong** (Master's Student, Sociology), **Marjorie Rugunda** (PhD Student, Institute for Gender, Race, Sexuality & Social Justice) and **Peter Zhang** (PhD Student, History) began working as Editorial Assistants, supporting the *Migration Insight* Series.

Financial Resources

CMS PROGRAM FUNDS (ANNUAL SPONSORS)

As a Faculty of Arts Research Centre, CMS is supported by annual funds from the UBC Faculty of Arts, the Departments of Political Science, Sociology, Geography, and Anthropology, Central, Eastern & Northern European Studies, the Peter A. Allard School of Law. The 2024-25 academic year marked the final year of CMS's initial five-year term as a UBC Centre. In 2025, CMS successfully renewed its status for an additional five-year term.

ANNUAL CONTRIBUTIONS FROM ACADEMIC UNITS & FACULTY OF ARTS					
	2020-21	2021-22	2022-23	2023-24	2024-25
Academic Units	\$43,000	\$61,000	\$62,000	\$61,000	\$61,000
Faculty of Arts	\$43,000	\$58,000	\$58,000	\$58,000	\$58,000
UBC SPONSOR CONTRIBUTIONS	\$86,000	\$119,000	\$120,000	\$119,000	\$119,000

GCRC FUNDS (GRANTS FOR CATALYZING RESEARCH CLUSTERS)

CMS funds most of its programming through a competitively awarded GCRC Established Cluster Grant from the UBC Office of the Vice-President, Research and Innovation (VPRI). Programming expenditures include the cost of Centre events and initiatives; CMS research group programming; funds to support graduate student training, awards, and travel; competitive seed funding for new research projects; and matching funds to leverage external grant applications. Final GCRC bridge funding totalling \$200,000 has been awarded for another three years ending in 2028.

GCRC FY25 CATEGORIES & PERCENTAGES			
	Total	Percentage	Rounded Percentage
Core Events and Knowledge Mobilization	\$54,288.61	47.76%	48%
Awards, Prizes, Student Training & Event Sponsorships	\$19,881.01	17.49%	17%
Operational Costs	\$13,272.30	11.68%	12%
EDI Support & Training and Indigenous Consultation	\$10,569.07	9.30%	9%
Graduate Student Employment & Benefits	\$10,546.26	9.28%	9%
Governance	\$5,110.09	4.50%	5%
TOTAL	\$113,667.34	100%	100%

CFREF FUNDS (CANADA FIRST RESEARCH EXCELLENCE FUND)

2024-25 saw the continuation of the Bridging Divides research program, funded by the Canada First Research Excellence Fund (CFREF). This 7-year award totals \$12.4 million. The second year has seen core researchers further establish their personnel and research projects. CMS has reached a full complement of staff to support the extensive administration of the program. Seven new researchers from UBC Vancouver and UBC Okanagan were awarded funding for one year. Knowledge mobilization and public programming have continued, particularly through our community and Indigenous partnerships.

CFREF FY25 CATEGORIES & PERCENTAGES			
	Total	Percentage	Rounded Percentage
Management & Administration (Staff Costs)	\$354,895.85	31.78%	32%
Postdoctoral Employment & Benefits	\$261,720.11	23.44%	23%
Graduate Student Employment & Benefits	\$201,133.22	18.01%	18%
Professional Services, Knowledge Mobilisation & Regulatory Requirements	\$122,478.38	10.97%	11%
Travel, Equipment & Materials	\$102,608.99	9.19%	9%
Research Facilities & Resources	\$73,865.06	6.61%	7%
TOTAL	\$1,116,701.61	100%	100%

05

Further Information

Appendix A: Funding and Support

UBC SPONSOR UNITS • *Pledged annual funds and in-kind contributions*

- Department of Anthropology
- Department of Central, Eastern and Northern European Studies
- Department of Geography
- Department of Political Science
- Department of Sociology
- Faculty of Arts Dean's Office
- Peter A. Allard School of Law

GCRC FUNDS • *Grants for Catalysing Research Clusters*

CMS programming is supported by competitively awarded funds from the GCRC Competition, provided by the UBC Office of the Vice-President, Research and Innovation (VPRI). 2024-25 was the second year of a 2-year grant from GCRC totalling \$200,000. Final GCRC bridge funding totalling \$200,000 has been awarded for another 3 years ending in 2028.

OTHER UBC SUPPORT • *Occasional programming funds, in-kind contributions, or event co-sponsorships*

- Centre for European Studies
- Centre for Francophonie
- Comics Studies Cluster
- Department of Ancient Mediterranean and Near Eastern Studies
- Department of Asian Studies
- Department of Central, Eastern and Northern European Studies
- Department of French, Hispanic and Italian Studies
- Digital Scholarship in the Arts
- Latin American Studies
- Media Relations
- Pacific Islands Research Network
- Popular Media for Social Change Research Excellence Cluster
- School of Public Policy and Global Affairs
- Stone Centre for Wealth and Income Inequality
- UBC Connects
- UBC Okanagan
- UBC Robson Square

EXTERNAL SUPPORT • *Occasional programming funds, in-kind contributions, or event co-sponsorships*

- AMSSA (Affiliation of Multicultural Societies and Service Agencies of BC)
- DIVERSEcity
- Frog Hollow Neighbourhood House
- German Studies Canada

- Immigrant Employment Council of BC
- Immigration Policy and Integration Branch, BC Ministry of Post-Secondary Education and Future Skills
- STEPS Public Art
- The Connected Past (TCP)
- Vancouver International Airport
- Vantage Point
- Waterloo Centre for German Studies
- Where We Stand
- YMCA BC

RESEARCH GRANTS

In 2024-25, CMS central research was funded by existing grants from the following entities:

CFREF (Canada First Research Excellence Fund)

- Migrant Integration in the Mid-21st Century: Bridging Divides (\$12.4 million over 7 years)

SSHRC (Social Sciences and Humanities Research Council)

- Belonging in Unceded Territory (Partnership Development Grant – \$200,000 over 3 years [extended])
- Complex Migration Flows and Multiple Drivers in Comparative Perspective ("MEMO") (Partnership Grant – \$56,400 over 3 years [increased to 94,000 over 6 years])

Appendix B: CMS Affiliation and CMS Affiliates (as of June 2025)

At the heart of the CMS community is a vibrant network of affiliates, including UBC faculty, postdocs, and graduate students; scholars and students from other BC universities; visiting academics; and practitioners from the immigration sector. This diverse mix fosters rich, cross-sector collaboration—fueling new programs, publications, and partnerships.

CMS affiliation offers a range of benefits. Faculty affiliates can apply for CMS research funds, workshop support, and awards. We facilitate research partnerships, and promote affiliates' work through initiatives like the Migration Insights Series and our Annual Research Conference. Graduate student affiliates gain valuable experience working with faculty, researchers, and community partners. They are eligible for the Graduate Certificate in Migration Studies, CMS paper competitions, travel awards, and GAA roles. They can also join CMS Research Groups, participate in governance, and access occasional internships with community organizations.

UBC FACULTY AFFILIATES

1. **Afsoun Afsahi**, Assistant Professor, Political Science
2. **Angela Anderson**, Sessional Lecturer, Creative & Critical Studies (UBC Okanagan)
3. **Efrat Arbel**, Associate Professor, Allard School of Law
4. **Fatemeh Arian Nejad**, Sessional Lecturer, Educational Studies
5. **Gage Averill**, Provost & Vice-President Academic, Professor, Music
6. **Jemima Nomunume Baaada**, Assistant Professor, Geography
7. **Kimberly Bain**, Assistant Professor, English Language & Literatures
8. **Erin Baines**, Professor, School of Public Policy & Global Affairs
9. **George Belliveau**, Professor, Language & Literacy Education
10. **Alexia Bloch**, Professor, Anthropology
11. **Irene Bloemraad**, Professor, Political Science, Sociology, CMS Co-Director
12. **Sophie Borwein**, Assistant Professor, Political Science
13. **Marie-Eve Bouchard**, Assistant Professor, French, Hispanic & Italian Studies
14. **Katherine Bowers**, Associate Professor & Head, Central, Eastern & Northern European Studies
15. **Thea Bracewell**, Adjunct Professor, School of Public Policy & Global Affairs
16. **Benjamin Bryce**, Associate Professor, History
17. **Amanda Cardoso**, Lecturer, Linguistics
18. **Anna Casas Aguilar**, Associate Professor, French, Hispanic & Italian Studies
19. **Shirley Chau**, Associate Professor, Social Work
20. **Amanda Cheong**, Assistant Professor, Sociology
21. **Benjamin Cheung**, Lecturer, Psychology
22. **John Christopoulos**, Associate Professor, History
23. **John Culbert**, Sessional Lecturer, English Language & Literatures, French, Hispanic & Italian Studies
24. **Arianna Dagnino**, Sessional Lecturer, French, Hispanic & Italian Studies
25. **Megan Daniels**, Assistant Professor, Ancient Mediterranean & Near Eastern Studies
26. **Catherine Dauvergne**, Professor, Allard School of Law
27. **Franco De Angelis**, Professor, Ancient Mediterranean & Near Eastern Studies
28. **Hessam Dehghani**, Assistant Professor, Asian Studies
29. **Antje Ellermann**, Professor, Political Science, CMS Co-Director
30. **Sue Frohlick**, Professor of Anthropology, Gender, Women & Sexual Studies, Community, Culture & Global Studies (UBC Okanagan)

31. **Anita Girvan**, Associate Professor, English & Cultural Studies (UBC Okanagan)
32. **Terri Givens**, Professor, Political Science
33. **Eagle Glassheim**, Professor, History
34. **Benjamin Goold**, Professor, Allard School of Law
35. **David Gramling**, Professor, Central, Eastern & Northern European Studies
36. **David Green**, Professor, Vancouver School of Economics
37. **Neha Gupta**, Assistant Professor, Community, Culture & Global Studies (UBC Okanagan)
38. **Markus Hallensleben**, Associate Professor, Central, Eastern & Northern European Studies
39. **Julia Gabriele Harten**, Assistant Professor, School of Community & Regional Planning
40. **Bethany Hastie**, Associate Professor, Allard School of Law
41. **Carla Hilario**, Assistant Professor, Nursing
42. **Janice Ho**, Associate Professor, English Language & Literatures
43. **Michael Hooper**, Associate Professor, School of Community & Regional Planning
44. **Vince Hopkins**, Assistant Professor, Political Science
45. **Suzanne Huot**, Associate Professor, Occupational Science & Occupational Therapy
46. **Mohamed Ibrahim**, Assistant Professor, Social Work
47. **Mehran Jamshidi**, Lecturer, Sauder School of Business
48. **Annamma Joy**, Associate Dean, Research and Professor of Marketing (UBC Okanagan)
49. **Anna Jurkevics**, Assistant Professor, Political Science
50. **Aryan Karimi**, Assistant Professor, Sociology
51. **Karun Karki**, Associate Professor, Social Work
52. **Anusha Kassin**, Associate Professor, Educational & Counselling Psychology, Special Education
53. **Asha Kaushal**, Associate Professor, Allard School of Law
54. **Peter Klein**, Professor, School of Journalism, Writing & Media
55. **Uma Kumar**, Lecturer, Central, Eastern & Northern European Studies
56. **Sean Lauer**, Professor, Sociology
57. **Sarah Leavitt**, Assistant Professor, School of Creative Writing
58. **Barbara Lee**, Assistant Professor, Social Work
59. **Christopher Lee**, Associate Professor, English Language & Literatures
60. **Thomas Lemieux**, Professor, Economics
61. **Guofang Li**, Professor, Language & Literacy Education
62. **Xiaojun Li**, Associate Professor, Political Science
63. **Neda Maghbouleh**, Associate Professor & Canada Research Chair in Race, Ethnicity, Migration, and Identity, Sociology
64. **Minelle Mahtani**, Associate Professor, Institute for Gender, Race, Sexuality & Social Justice
65. **Renisa Mawani**, Professor, Sociology
66. **Kathryn McConnell**, Assistant Professor, Sociology
67. **Lennon Mhishi**, Assistant Professor, Anthropology
68. **Anne Murphy**, Associate Professor, History
69. **Elizabeth "Biz" Nijdam**, Assistant Professor, Central, Eastern & Northern European Studies
70. **Sofia Noori**, Assistant Professor, Educational Studies
71. **Nathan Nunn**, Professor, Vancouver School of Economics
72. **Nikhita Obeegadoo**, Assistant Professor, Language & World Literatures (UBC Okanagan)
73. **Karen O'Regan**, Sessional Lecturer, French, Hispanic & Italian Studies
74. **Kai Ostwald**, Associate Professor, School of Public Policy & Global Affairs, Political Science
75. **Jenny Peterson**, Associate Professor, Political Science
76. **Julien Picault**, Professor, Economics, Philosophy & Political Science (UBC Okanagan)
77. **Geraldine Pratt**, Professor & Head, Geography
78. **Yue Qian**, Associate Professor, Sociology
79. **Madeleine Ransom**, Assistant Professor, Economics, Philosophy & Political Science (UBC Okanagan)
80. **Lisa Richlen**, Sessional Lecturer, Sociology

81. **Oral Robinson**, Lecturer, Sociology
82. **James Rochlin**, Professor, Political Science
83. **Elizabeth Saewyc**, Professor and Director, Nursing
84. **Alessandra Santos**, Associate Professor, Theatre & Film
85. **Elif Sari**, Assistant Professor, Anthropology
86. **Thomas Schneider**, Professor, Ancient Mediterranean & Near Eastern Studies
87. **Marc-David Seidel**, Associate Professor, Sauder School of Business
88. **Hongxia Shan**, Associate Professor, Educational Studies
89. **Pasang Sherpa**, Assistant Professor, Asian Studies, Institute for Critical Indigenous Studies
90. **Sara Shneiderman**, Associate Professor, Anthropology, School of Public Policy & Global Affairs
91. **Rosanne Sia**, Assistant Professor, Institute for Gender, Race, Sexuality & Social Justice
92. **Mahtab Sirdani**, Sessional Lecturer, Asian Studies
93. **Michelle Stack**, Associate Professor, Educational Studies
94. **Guy Stecklov**, Professor, Sociology
95. **Juanita Sundberg**, Associate Professor, Geography
96. **Ania Switzer**, Sessional Lecturer, Central, Eastern & Northern European Studies
97. **Alison Taylor**, Professor, Educational Studies
98. **Alice Te Punga Somerville**, Professor & Head, English Language & Literatures, Institute for Critical Indigenous Studies
99. **Heidi Tworek**, Professor; Director, Centre for the Study of Democratic Institutions, History
100. **Claudio Vellutini**, Associate Professor, Music
101. **Ramón Antonio Victoriano-Martínez**, Assistant Professor, French, Hispanic & Italian Studies
102. **Ana Vivaldi**, Sessional Lecturer, Sociology
103. **Annie Wan**, Associate Professor, Creative Studies (UBC Okanagan)
104. **Shannon Ward**, Assistant Professor, Community, Culture & Global Studies (UBC Okanagan)
105. **Rima Wilkes**, Professor, Sociology
106. **Matthew Wright**, Associate Professor, Political Science
107. **Miu Chung Yan**, Professor, Social Work
108. **Kyong Yoon**, Professor, Creative & Critical Studies (UBC Okanagan)
109. **Su-Anne Yeo**, Sessional Lecturer, Asian Studies, Theatre & Film
110. **Ayaka Yoshimizu**, Associate Professor, Asian Studies
111. **Henry Yu**, Professor, History, Principal, St John's College
112. **Helena Zeweri**, Assistant Professor, Anthropology
113. **Gaoheng Zhang**, Associate Professor, French, Hispanic & Italian Studies
114. **Ying Zhu**, Associate Professor, Management (UBC Okanagan)
115. **Antje Ziethen**, Associate Professor, French, Hispanic & Italian Studies

UBC POSTDOCTORAL AFFILIATES

1. **Lisa Ruth Brunner**, Postdoctoral Fellow, Centre for Migration Studies
2. **María Cervantes**, Postdoctoral Fellow, Geography
3. **Monique Gagné Petteni**, Research Associate, School of Population & Public Health
4. **Shahin Kassam**, Postdoctoral Fellow, School of Nursing
5. **Kevin Lee**, Killam Postdoctoral Fellow, Political Science
6. **Jennifer Ma**, Postdoctoral Fellow, School of Social Work
7. **Kashif Raza**, Postdoctoral Fellow, Educational Studies
8. **Christian Schimpf**, Postdoctoral Fellow, Political Science
9. **Sandra Schinnerl**, Postdoctoral Fellow, Centre for Migration Studies
10. **Jessica Templeman**, Postdoctoral Fellow, Allard School of Law
11. **Felix Landry Yuan**, Postdoctoral Fellow, Institute for Resources, Environment and Sustainability

EMERITI AFFILIATES

1. **Gillian Creese**, Professor Emerita, Institute for Gender, Race, Sexuality & Social Justice, Sociology
2. **Daniel Hiebert**, Professor Emeritus, Geography
3. **Richard Johnston**, Professor Emeritus, Political Science

GRADUATE STUDENT AFFILIATES

Blue text indicates 2024-25 Graduate Certificate students

1. **Afsaneh Abbaszadeh**, Educational Studies
2. **Amira Ahmed**, Interdisciplinary Graduate Studies (UBC Okanagan)
3. **Saher Ahmed**, Interdisciplinary Graduate Studies (UBC Okanagan)
4. **Mariam Al Barazi**, Interdisciplinary Graduate Studies (UBC Okanagan)
5. **Emily Amburgey**, Anthropology
6. **Khadija Anjum**, School of Community & Regional Planning
7. **Aguilera Aracely**, Language & literacy Education
8. **Adam Arca**, School of Population & Public Health
9. **Caroline Armstrong**, Ancient Mediterranean & Near Eastern Studies
10. **Marie Jose Athie Martinez**, Educational Studies
11. **Tolulope Babatunde**, Educational Studies
12. **Anam Bashir**, Community & Regional Planning
13. **Allen Baylosis**, Institute for Gender, Race, Sexuality & Social Justice
14. **Atreyi Bhattacharjee**, Allard School of Law
15. **Ritwik Bhattacharjee**, Interdisciplinary Studies
16. **Mahashewta Bhattacharya**, Anthropology
17. **Amy Huiyi Bu**, Educational Studies
18. **Róisín Cahill**, Political Science
19. **Manlin Cai**, Sociology
20. **Amarildo Ceka**, School of Population & Public Health
21. **Meghna Chatterjee**, English Language & Literatures
22. **Cheng Chi**, Asian Studies
23. **Farrukh Chishtie**, Occupational Science and Occupational Therapy
24. **Zarin Masah Chowdhury**, Language & World Literatures
25. **Max Cohen**, Geography
26. **Natasha Damiano**, Rehabilitation Sciences
27. **Maya Daurio**, Anthropology
28. **Eric de Roulet**, Interdisciplinary Graduate Studies (UBC Okanagan)
29. **Fabiola del Rincón Fernández**, French, Hispanic & Italian Studies
30. **Anne-Cécile Delaisse**, Rehabilitation Sciences, Occupational Science & Occupational Therapy
31. **Alexander Dow**, Community, Culture & Global Studies (UBC Okanagan)
32. **Trishala Dutta**, English Language & Literatures
33. **Ajibola Fabusuyi**, Central, Eastern & Northern European Studies
34. **Zachary Moulaye Gaouad**, French, Hispanic & Italian Studies
35. **Jon Gill**, International Relations
36. **Yu Guo**, Educational Studies
37. **Nehal Gupta**, School of Public Policy & Global Affairs
38. **Eleonore Guy**, Anthropology
39. **Quinton Huang**, History
40. **Daniel Sion Hwang**, Sociology
41. **Henrik Jacobsen**, Political Science

42. **Behtash Javidsharifi**, Civil Engineering
43. **Molly Joeck**, Allard School of Law
44. **Guntas Kaur**, Sociology
45. **Fiana Kawane**, English Language & Literatures
46. **Ibukun Kayode**, Interdisciplinary Studies
47. **Maham Kamal Khanum**, Educational Studies
48. **Bahar Khazei**, Educational Studies
49. **Louisa-May Khoo**, School of Community & Regional Planning
50. **Yeonjoo Kim**, Educational Studies
51. **Hilal Kina**, Anthropology
52. **Capri Kong**, Sociology
53. **Marcus Lau**, Educational & Counselling Psychology, Special Education
54. **Jisun Lee**, Geography
55. **Jing Li**, Anthropology
56. **Weiqi Li**, Sociology
57. **Sophie Liu**, Sociology
58. **Yueshan Liu**, School of Public Policy & Global Affairs
59. **Jimmy Lo**, Theatre & Film
60. **Chieh Lü**, Educational Studies
61. **Carlos M-Castro**, French, Hispanic & Italian Studies
62. **Naomi Maldonado-Rodriguez**, Kinesiology
63. **Keenan Daniel Manning**, Educational Studies
64. **Khayria Mansouri**, School of Public Policy & Global Affairs
65. **Angelo Massaro**, Interdisciplinary Graduate Studies (UBC Okanagan)
66. **Dhriti Mehta**, Political Science
67. **Ziwen Mei**, Language & Literacy Education
68. **Alix Mintha**, Anthropology
69. **Meghna Mohandas**, School of Community & Regional Planning
70. **Stephen Odoi**, School of Public Policy & Global Affairs
71. **Temitayo Olarewaju**, Allard School of Law
72. **James Pangilinan**, Geography
73. **Francesca Pegorer**, Anthropology
74. **Valeriia Pelevina**, Community, Culture & Global Studies (UBC Okanagan)
75. **Nicholas Phin**, Political Science
76. **Atieh Razavi Yekta**, Occupational Science & Occupational Therapy
77. **Cindy Robin**, Political Science
78. **Daniel Rojas**, Political Science
79. **Mirta Roncagalli**, French, Hispanic & Italian Studies
80. **Alex Ross**, Educational Studies
81. **Marjorie Rugunda**, Gender, Race, Sexuality & Social Justice
82. **Sebastian Santana Ortiz**, School of Population & Public Health
83. **Lara Sarlak**, Anthropology
84. **Asya Savelyeva**, Anthropology
85. **Claudia Serrano**, Political Science
86. **Monir Shahzeidi**, School of Kinesiology
87. **Saguna Shankar**, School of Library, Archival & Information Studies
88. **Sandra Sikanku**, Educational Studies
89. **Imroze Singh Deol**, School of Population & Public Health
90. **Lorah Steichen**, Geography
91. **Emma Stirling-Cameron**, School of Population & Public Health
92. **Robert Straughan**, Political Science

93. **Cheuk Him Ryan Sun**, History
94. **Astou Thiam**, Occupational Science & Occupational Therapy
95. **Karen Lok Yi Wong**, School of Social Work
96. **Sisi Yang**, Anthropology
97. **Tori Yang**, Sociology
98. **Caitlyn Yates**, Anthropology
99. **Jiin Yoo**, Educational Studies
100. **Nassim Zand Dizari**, Interdisciplinary Graduate Studies (UBC Okanagan)
101. **Lin Zeng**, Anthropology
102. **Peter Zhang**, History
103. **Rose Xueqing Zhang**, Sociology
104. **Yijia Zhang**, Sociology

LOWER MAINLAND AFFILIATES & VISITING SCHOLARS

Blue text indicates 2024-25 visiting scholars

1. **Shiva Babu**, Registered Clinical Counsellor, Counselling Psychology, Yorkville University
2. **Satwinder Kair Bains**, Director & Associate Professor of South Asian Studies, University of the Fraser Valley
3. **Koyali Burman**, Manager, Vancouver Local Immigration Partnership
4. **Inaam Charaf**, Assistant Professor, University of the Fraser Valley
5. **Magally Constant**, Assistant Professor, Educational Studies, Simon Fraser University
6. **Katie Crocker**, CEO, Affiliation of Multicultural Societies & Service Agencies of BC (AMSSA)
7. **Eline De Rooij**, Graduate Program Chair & Professor, Political Science, Simon Fraser University
8. **David Durand-Delacre**, Assistant Professor, Geography (visiting from the United Nations University Institute for Environment and Human Security (UNU-EHS))
9. **Evelyn Encalda Grez**, Assistant Professor, Sociology-Labour Studies Program, Simon Fraser University
10. **Baran (Abu) Fakhri**, PhD Candidate, Sociology & Anthropology, Simon Fraser University
11. **Mojan Farshchi**, Associate Lawyer, MKS Immigration Lawyers
12. **Aline Ferreira de Faria**, Postdoctoral Fellow, Pacific Institute on Pathogens, Pandemics and Society (PIPPS), Simon Fraser University
13. **Aude-Claire Fourot**, Professor, Political Science, Simon Fraser University
14. **Jenny Francis**, Instructor, Geography, Langara College
15. **Eirini Giannarakis**, Evaluation Consultant, Ference & Company
16. **Hasrat Grewal Gill**, Instructor/Program Manager, Community Development and Outreach, Capilano University
17. **Julie Ham**, 2024 Visiting Scholar; Associate Professor, Sociology and Critical Criminology at Brock University
18. **Sara Hosseini-Nezhad**, PhD Clinical Psychology, Eötvös Loránd University
19. **Quang Huynh**, Graduate Student, Sociology & Anthropology, Simon Fraser University
20. **Lois Klassen**, Postdoctoral Fellow, criticalMediArtStudio (cMAS), Simon Fraser University
21. **Nigel Mantou Lou**, Assistant Professor, Psychology, University of Victoria
22. **Farah Maaz Mawani**, Assistant Professor, School of Public Health and Social Policy, University of Victoria
23. **Dale Michael McCartney**, Assistant Professor, Arts and Integrated Studies, University of the Fraser Valley
24. **Afshan Paarlberg**, 2024-25 Visiting Scholar; Assistant Research Scholar with the Indiana University Lilly Family School of Philanthropy

- 25. **Christina Page**, Instructor, Melville School of Business, Kwantlen Polytechnic University
- 26. **Mark Pickup**, Professor, Political Science, Simon Fraser University
- 27. **Kathy Sherrell**, Director of Settlement, Immigrant Services Society of BC
- 28. **Rupak Shrestha**, Assistant Professor, International Studies, Simon Fraser University
- 29. **Riana Sihota**, PhD Candidate, Health Sciences, Simon Fraser University
- 30. **Sonja van der Putten**, PhD, Educational Theory & Practice, Simon Fraser University
- 31. **Lynn Weaver**, Senior Consultant, Elected Director, VanCity Board
- 32. **Steven Weldon**, Professor, Political Science, Simon Fraser University
- 33. **Amea Wilbur**, Associate Professor, Adult Education, University of the Fraser Valley
- 34. **Sabine Zimmermann**, Instructor, German, Douglas College

Appendix C: UBC Units Represented by CMS Affiliates

1. Peter A. Allard School of Law
2. Ancient Mediterranean & Near Eastern Studies
3. Anthropology
4. Asian Studies
5. Central, Eastern & Northern European Studies
6. Civil Engineering
7. Community, Culture & Global Studies – UBC Okanagan
8. Creative & Critical Studies – UBC Okanagan
9. Economic, Philosophy & Political Science – UBC Okanagan
10. Educational and Counselling Psychology, and Special Education
11. Educational Studies
12. Educational Technology
13. English & Cultural Studies – UBC Okanagan
14. English Language & Literatures
15. French, Hispanic & Italian Studies
16. Geography
17. History
18. Institute for Critical Indigenous Studies
19. Institute for Gender, Race, Sexuality & Social Justice
20. Institute for Resources, Environment and Sustainability
21. Interdisciplinary Graduate Studies – UBC Okanagan
22. Language and Literacy Education
23. Language and World Literatures – UBC Okanagan
24. Linguistics
25. Management – UBC Okanagan
26. Occupational Science & Occupational Therapy
27. Political Science
28. Psychology
29. Rehabilitation Sciences
30. Sauder School of Business
31. School of Community & Regional Planning
32. School of Creative Writing
33. School of Journalism, Writing, and Media
34. School of Kinesiology
35. School of Music
36. School of Nursing
37. School of Population and Public Health
38. School of Public Policy & Global Affairs
39. Social Work
40. Sociology
41. Theatre and Film
42. Vancouver School of Economics

Appendix D: Community and Institutional Partners

PARTNER ORGANIZATIONS

Active in 2024-25

- Affiliation of Multicultural Societies & Service Agencies of BC (AMSSA)
- Frog Hollow Neighbourhood House (FHNH)
- Immigrant Services Society of BC (ISSofBC)
- S.U.C.C.E.S.S.
- MOSAIC
- YMCA BC
- Immigrant Employment Council of BC (IEC-BC)

ACADEMIC INSTITUTIONS

Active in 2024-25

- Canada Excellence Research Chair in Migration & Integration (CERC Migration), Toronto Metropolitan University
- Institute for Research on Migration and Society (IRMS), Concordia University
- University of Alberta
- School of History, Anthropology, Philosophy & Politics (HAPP), Queen's University Belfast
- University of British Columbia, Okanagan campus

Appendix E: Research Publications and Achievements

PUBLICATIONS

The following publications were reported by CMS faculty affiliates for the 2024-25 academic year. Please note that this is not a comprehensive list.

Yoon, R. & Wong, J. & Leinic C-L. & Akbarian, A. & **Abdulai, A-F.** & Hou, R. & Ho, M. & Zinaic, R. & Anoushka, A. (2024). Scoping review protocol: what is the state of evidence for the use of communication apps with immigrant seniors in long-term care and community settings?. *BMJ Open*. 14. 10.1136/bmjopen-2024-089939. Link: <https://bmjopen.bmj.com/content/14/8/e089939>

Arbel, E. (2024). Border Trouble: Critical Reflections on the Canada-US Safe Third Country Agreement Litigation. *International Journal of Migration and Border Studies*, 8(3/4), 240-260. Link: <https://doi.org/10.1504/IJMS.2024.145491>

Arbel, E., & Joeck, M. (2025). Incalculable Harm: Analyzing the Impact of the COVID-19 Pandemic on Immigration Detention in Canada. *Ottawa Law Review*, 56(1), 93-150. Link: <https://rdo-olr.org/incalculable-harm-analyzing-the-impact-of-the-covid-19-pandemic-on-immigration-detention-in-canada/>

Glanville, E. G., & **Arbel, E.** (2024). Labels, Discourse, and Meaning-Making. In C. R. Clark-Kazak (Ed.), *Forced Migration In/To Canada: From Colonization to Refugee Resettlement* (pp. 58-71). McGill-Queen's University Press. Link: <http://dx.doi.org/10.2139/ssrn.5027824>

Baada, J. N., Kansanga, M., Kangmennaang, J., & Luginaah, I. (2025). Migrant Women's Food Insecurity Experiences in the Breadbasket of Ghana. *New Directions in South-South Migration* (pp. 175-187). Singapore: Springer Nature Singapore. Link: https://link.springer.com/chapter/10.1007/978-981-97-9715-8_10

Bloch, A. (2024). Mothers in Migration: Kinship, Care, and African Asylum Seekers in Post-socialist Russia. Special issue on "Mothering (in) African diaspora: shaping the present, making the future" to appear in journal *African Diaspora*. 22pp.

Bloch, A. (2024). Секс, любовь и миграция: постсоциализм, модерность и интимность от Стамбула до Арктики [Russian translation of *Sex, Love, and Migration: Postsocialism, Modernity, and Intimacy from Istanbul to the Arctic*], Cornell University Press, 2017. Boston, MA: Academic Studies Press. Forthcoming, October 2025.

Bloemraad, I., Harell, A., & Fraser, N. (2024). Categorical Inequalities and Canadian Attitudes Toward Positive and Negative Rights. *Canadian Journal of Political Science*, 57: 231-253. Link: <https://doi.org/10.1017/S0008423924000076>

Voss, K., Lauterwasser, S., & **Bloemraad, I.** (2024). "Inactive and quiescent? Immigrant Collective Action in Comparative Perspective, 1960-1995." *Socius* 10. Link: <https://doi.org/10.1177/23780231241249932>

Brunner, L. R. (2025). International student mobility and the politics of distance education. *British Journal of Educational Technology*, 56(2), 870-889. Link: <https://doi.org/10.1111/bjet.13543>

Brunner, L. R., & Cervantes-Macías, M. E. (2025). Reflections on Canada's first international student cap. *Critical Internationalization Studies Review*, 4(1), article 2. Link: <https://doi.org/10.70531/2832-3211.1043>

Brunner, L. R., Shokirova, T., Gamal, M., & Stein, S. (2025). Higher education's care/control of refugee and displaced students. *Journal of Ethnic and Cultural Studies*, 12(2), 11-33. Link: <https://doi.org/10.29333/ejecs/2212>

Brunner, L. R., Streitwieser, B., & Bhandari, R. (2024). International student mobility, opportunity, and the voluntariness of migration: A new conceptual approach. *International Higher Education*, 118, p. 26-28. Link: <https://ihe.bc.edu/pub/pf8iru1b>

Brunner, L. R., Trilokekar, R. D., Morris-Lange, S., Liu, H., Laufer, M., El Masri, A., & Joshi, A. (2025). Magnets, gatekeepers, surveillants, and refiners: The emergence of higher education institutions as migration governance actors in Australia, Canada, and Germany, 1990 to 2019. *International Journal of Educational Research*, 129, 102490.

Link: <https://doi.org/10.1016/j.ijer.2024.102490>

Brunner, L., & Cervantes-Macías, M. E. (2025). Reflections on Canada's first international student cap. *Critical Internationalization Studies Review*, 4(1), 2. Link: <https://scholarship.shu.edu/cisr/vol4/iss1/2/>

Cai, M., Qian, Y., & Hu, Y. (2025). The efficiency paradox: A temporal lens into online dating among Chinese immigrants in Canada. *Journal of Social and Personal Relationships*. Link: <https://doi.org/10.1177/02654075251339257>

Lui, L., Cai, M., & Qian, Y. (2024). Comfortably "Western": How Chinese International Students Imagine Canada. *Canadian Ethnic Studies*, 56(2), 157-176. Link: <https://muse.jhu.edu/article/934427>

Cervantes-Macías, M. & Delaise, A.C. (2024). Temporal Trajectories: A Comparative Analysis of Mexican and Vietnamese Students' Strategies in the Canadian Education System. *Comparative and International Education*. Link: <https://ojs.lib.uwo.ca/index.php/cie-eci/article/view/17160>

Marcucci, S., Verhulst, S., & Cervantes, M. E. (2025). When forecasting and foresight meet data and innovation: toward a taxonomy of anticipatory methods for migration policy. *Data & Policy*, 7, e24. Link: <https://doi.org/10.1017/dap.2024.56>

Cheong, A. R. (2024). Who Counts as a Stateless Person? Nation-Statist Logics and the Liabilities of Potential Citizenship Elsewhere. *Ethnic and Racial Studies*, 48(4): 883-905. Link: <https://doi.org/10.1080/01419870.2024.2404482>

Cheong, A. R. (2025). Racial Exclusion by Bureaucratic Omission: Enumerative Non-Recognition, Documentary Dispossession, and the Rohingya Crisis in Myanmar. *Social Problems*, 72(2): 341-357. Link: <https://doi.org/10.1093/socpro/spae003>

Cheong, A. R., Thomas, N. C. B. & Baltazar, M. A. K. (2025). Territorial Claims, Unclaimed People: The Postcolonial Geopolitics of Statelessness in Sabah, Malaysia. *Ethnic and Racial Studies*. Link: <https://doi.org/10.1080/01419870.2024.2441912>

Culbert, J. (April 2025). *Proximities: Literature, Mobility, and the Politics of Displacement*. Liverpool University Press. Link: <https://www.liverpooluniversitypress.co.uk/doi/book/10.3828/9781836242925>

Daniels, M. (2025). Archaeology and Migration: The Journey Towards a Relational World. *Avar*, 4.1: 38-74. Link: <https://www.avarjournal.com/avar/issue/view/130>

Delaisse, A.-C., & Huot, S. (accepted/in press). Studying occupations across borders: the value of cross-national comparative research in occupational science. *Journal of Occupational Science*.

Delaisse, A.-C., & Huot, S. (accepted/in press). Thinking about decolonization in the context of immigration to Francophone minority communities. *Enjeux et société*.

Delaisse, A.-C., Barber, T., & Huot, S. (accepted/in press). A critical examination of international education mobility regimes: Comparative insights from Vietnamese students in Canada, France and United Kingdom. *Journal of Comparative and International Higher Education*.

Delaisse, A.-C., Barber, T., Zhang, G., & Huot, S. (2025). A dynamic and critical approach to belonging as a dimension of occupation. *Journal of Occupational Science*, 31(1), 36-53. <https://doi.org/10.1080/14427591.2024.2394157>

Delaisse, A.-C., Barber, T., Zhang, G., & Huot, S. (2025). Constructing categories of 'desirable migrants' through bureaucracy in French and Canadian mobility regimes. *Journal of Ethnic and Migration Studies*. (early online). Link: <https://doi.org/10.1080/1369183X.2025.2501716>

Delaisse, A.-C., Huot, S., Piquemal, N., & Sall, L. (2025). The instrumentalization of French-speaking immigration in Canada within a colonial and economic approach: a critical discourse analysis. *Canadian Ethnic Studies*, 57(1), 29-50. Link: <https://dx.doi.org/10.1353/ces.2025.a960310>

Piquemal, N., **Delaisse, A.-C.**, Sall, L., Zellama, F., & **Huot, S.** (accepted/in press). Francophonie contestée et enjeux d'appartenance : Francophones d'ici et d'ailleurs. *Cahiers franco-canadiens de l'Ouest*.

Frohlick, S. (2025). In a City "Quiet Like a Ghost." *Anthropology and Humanism*. Link: <https://doi.org/10.1111/anh.70002>

Givens, T. (2025). The Securitization of Immigration Policy in Europe and the United States—the End of the Migration State?, *Political Science Quarterly*. Link: <https://doi.org/10.1093/psquar/qqaf049>

Hallensleben, M. (2025). Bettina Brandt and Yasemin Yildiz , eds. *Tales that Touch: Migration, Translation, and Temporality in Twentieth- and Twenty-First-Century German Literature and Culture*. De Gruyter, 2022. Seminar 61:1 (2025), pp. 58-60. Link: <https://doi.org/10.3138/seminar.61.1.rev001>

Hallensleben, M. (2025) [Introduction and Forum on] *Relational Ethics in German Studies and in the German University Context*, Seminar, Vol. 61, No. 2, pp. 71-116. Link: <https://doi.org/10.3138/seminar.61.2.1>

Ham, J., Vicera, C. & Gbadago, J. (2024). Developing decolonial aesthetics with migrant domestic worker creative communities. In G.K. Bhambra, L. Mayblin, K. Medien, and M.V. Vigoya (Eds.), *The SAGE Handbook of Global Social Theory*, SAGE.

Books Yu, Y., Vicera, C. & **Ham, J.** with Migrant Writers of Hong Kong and Lensational. (2024). *Inqat: An Anthology of Works by Migrant Domestic Worker Creatives in Hong Kong*. Hong Kong: Small Tune Press.

Clancey, A. & **Ham, J.** (2024). Chasing ghosts: Law enforcement, anti-trafficking and crimes against Asian sex workers. In E. van der Meulen, K. Roots and A. DeShalit (Eds.), *Trafficking Harms: Critical Perspectives on Human Trafficking in Canada*. Halifax: Fernwood Publishing.

Hopkins, V., Lawlor, A., & Paquet, M. (2024). How Do Immigration Policies Affect Voter Support for Low-Skilled Immigrants? Evidence from a Survey Experiment. *International Migration Review*, 01979183241296032. Link: <https://journals.sagepub.com/doi/full/10.1177/01979183241296032>

Razavi Yekta, A., McMahon, A., Nicholson, A., & **Huot, S.** (2025). Navigating occupational balance and identity in the platform economy: Perspectives from immigrant workers. *Journal of Occupational Science*, 32(1), 84-96. Link: <https://doi.org/10.1080/14427591.2024.2407841>

Reid, H., Waddell, A., Johnson, K., Waldron, K., Ballendine, O., Wilson, R., Lavalley, R., & Gaertner, D., & **Huot, S.** (accepted/in press). Co-creating occupational science research: Developing community-driven research priorities through relationship. *Journal of Occupational Science*.

Jurkevics, A. (2025). *Contested Territory: A Theory of Land and Democracy beyond Sovereign Bounds*. Oxford University Press. Link: <https://doi.org/10.1093/9780198922957.001.0001>

Karimi, A., & Byelikova, Y. (2024). Wartime (im)mobilities: effects of aspirations-capabilities on displaced Ukrainians in Canada and Germany and their viewpoints on those who remain in Ukraine. *Journal of Ethnic and Migration Studies*, 50(10), 2403-2422. Link: <https://doi.org/10.1080/1369183X.2024.2305282>

Karimi, A., & **Wilkes, R.** (2025). How to assign social groups to ethnic and racial categories after Racial Domination?. *Ethnicities*, 14687968251316882. Link: <https://doi.org/10.1177/14687968251316882>

Karimi, A., Thompson, S., & Bucerius, S. M. (2024). National Assimilation and/or Cosmopolitan Transnationalism? Impending Transnationalism among the Upwardly Mobile Children of Refugees. *Sociology*, 58(6), 1359-1377. Link: <https://doi.org/10.1177/00380385241242041>

Li, G., & Locher-Lo, C. (2024). Culture, language, and race: An AsianCrit perspective on newcomer Chinese transnational adolescents' navigation of intersectional discourses in Canadian schools. *International Multilingualism Research Journal*. Link: <https://doi.org/10.1080/19313152.2024.2335094>

- Li, G., & Qin, K.** (2024). Supporting and advocating for immigrant and refugee students and families in America's urban schools: Educators' agency and practices in everyday instruction. *Urban Education*, 59(2), 600-628. Link: <https://doi.org/10.1177/00420859221082671>
- Downes, P., **Li, G.**, Praag, L. V., & Lamb, S. (2024). *The Routledge International Handbook of Equity and Inclusion in Education*. New York: Routledge. Link: <https://doi.org/10.4324/9781003282921>
- Maghbouleh, N.** (2024). Invited Foreword to *Disaggregation Nation: A Landscape Review of State Race & Ethnicity Data Collection*, Policy Report by The Leadership Conference Education Fund (civilrights.org). Link: <https://civilrights.org/edfund/wp-content/uploads/sites/2/2024/07/Disaggregation-Nation-2024-MidYear-Update.pdf>
- Maghbouleh, N.** (2025). An Invisibility/Hypervisibility Paradox: The Sociology of Middle Eastern and North African (MENA) Americans. *Annual Review of Sociology*, Vol 51. Link: <https://doi.org/10.1146/annurev-soc-083024-064121>
- Maghbouleh, N.** (2025). Review of Ethnopolitical Entrepreneurs: Outsiders Inside Armenian Los Angeles. *Social Forces*. Volume 103, Issue 3, March, Page e3. Link: <https://doi.org/10.1093/sf/soae136>
- Schachter, A., **Maghbouleh, N.** & Flores, R. (2024). "To Uncover Disparities, Collect and Disaggregate Self-Identification Data for Middle Eastern and North African Americans," *American Journal of Public Health*. Link: <https://doi.org/10.2105/AJPH.2024.307864>
- Sharif, M., **Maghbouleh, N.** & Boozary, A. (2024). "COVID-19 Disparities among Arab, Middle Eastern, and West Asian Populations in Toronto: Implications for Improving Health Equity among Middle Eastern and North African (MENA) Communities in the United States," *Health Promotion Practice*. Link: <https://doi.org/10.1177/15248399221142898>
- McConnell, K.**, Fussell, E., DeWaard, J., Whitaker, S., Curtis, K.J., St. Denis, L., Balch, J. and Price, K., (2024). Rare and highly destructive wildfires drive human migration in the US. *Nature Communications*, 15(1), p.6631. Link: <https://www.nature.com/articles/s41467-024-50630-4>
- Murphy, A.** & Zehmisch P. (2024). Co-editors, of a special issue of *Asian Ethnology*, "Rethinking Regions: Locality and Circulation in South Asia." 83, 1 (2024). Link: <https://asianethnology.org/volume/83-1>
- McGuirk, E. and **Nunn, N.** (2025). Transhumant Pastoralism, Climate Change, and Conflict in Africa. *Review of Economic Studies*, Vol. 92, No. 1, pp. 404-441. Link: <https://doi.org/10.1093/restud/rdae027>
- Paarlberg, A.** (2024). Burden shifting to U.S. nonprofits: Supporting access to asylum when legal protection frameworks fail. *Nonprofit Policy Forum*. Link: <https://doi.org/10.1515/npf-2023-0071>
- Paarlberg, A.**, Doan, D., Osili, U., Thapa, S., & Kusasira, S. (2025). Indiana University Lilly Family School of Philanthropy. 2025 *Global Philanthropy Environment Index*. Link: <https://hdl.handle.net/1805/48117>
- Paarlberg, A.**, Estorcien, V., & Herzog, P. (2025). Civic integration of displaced youth: Immigrant organizations and police athletic leagues as examples of methods for nonprofit analyses. *Uprooted! The Wellbeing and Social Integration of Migrant Children and Youth*.
- Paarlberg, A.**, Hawash, R., & Sriram, S. (2024). Voiceless and stateless Rohingya refugees: Competing expectations among NGOs in Cox's Bazar, Bangladesh. *VOLUNTAS: International Journal of Voluntary and Nonprofit Organizations*, 35(3), 439-450. Link: <https://doi.org/10.1007/s11266-023-00606-7>
- Qian, Y.**, & Hu, Y. (2024). The digitalization of family life: A multilevel conceptual framework. *Journal of Marriage and Family*, 86(5), 1160-1183. Link: <https://doi.org/10.1111/jomf.12983>
- Qian, Y.**, & Hu, Y. (2025). How couples meet and assortative mating in Canada. *Journal of Marriage and Family*, 87(1), 392-407. Link: <https://doi.org/10.1111/jomf.12967>

- Raza, K.** (2024). Nested [Broader-Selective] integration of South Asians: Mediating role of language and ethnic networks. *International Journal of Migration and Integration*, 26, 639-667. Link: <https://doi.org/10.1007/s12134-024-01196-z>
- Rochlin, James** (accepted/in press). Spectrums of Power: The Plight of Refugees in Colombia", *Refugee Survey Quarterly*, 40pp.
- Shan, H.** (2024). Professional learning and knowledge 'transfer' in practice: Immigrant engineers reticulating the epistemic culture of the profession, *Educational Philosophy and Theory*. Link: <https://doi.org/10.3384/rela.2000-7426.ojs1476>
- Mirchandani, K., & **Shan, H.** (2024). The social reproductive labour of university students with hostile Jobs. *Journal of Youth Studies*, 1-15. Link: <https://doi.org/10.1080/13676261.2024.2321157>
- Taylor, A.** (2025). *Juggling rhythms: Working-student life in the 21st century*. Brill. Link: <https://brill.com/display/title/72365>
- Ward, S.** (2024). *Amdo Lullaby: An Ethnography of Childhood and Language Shift on the Tibetan Plateau*, University of Toronto Press. Link: <https://utppublishing.com/doi/book/10.3138/9781487558673>
- Wilkes, R. & Karimi, A.** (2024). A Transnational Amendment to Assimilation Theory: Country of Origin's Racial Status Versus Transnational Whiteness. *Ethnic and Racial Studies* 1-24. Link: <https://doi.org/10.1080/01419870.2023.2174810>
- Wilkes, R. & Karimi, A.** (2025). Are we really surmounting the binary? Visualizing race and ethnicity group relations via embedded relational diagrams. *Frontiers in Sociology*, section Race and Ethnicity. Link: <https://doi.org/10.3389/fsoc.2025.1553566>
- Wilkes, R. & Karimi, A.** (2025). Visualizing Social Theory with Embedded Relational Diagrams: Theoretical Illustration, Development, and Innovation. *American Sociologist*. Link: <https://doi.org/10.1007/s12108-025-09651-9>
- Wu, C., Kennedy, E., **Qian, Y.**, & **Wilkes, R.** (2025). How have Asians experienced discrimination differently during COVID-19? The role of nativity. *Migration, Mobility, & Displacement*, 7(1), 29-44. Link: <https://journals.uvic.ca/index.php/mmd/article/view/22269>
- Yoon, K.** (2025). Living in micro-networks: Korean migrants' social networking practices in Canadian cities. *International Migration*, 63 (3). Link: <https://onlinelibrary.wiley.com/doi/full/10.1111/imig.13357>
- Emiko McAllister, K., **Yoshimizu, A.**, & Ahadi, D. (2025). *Migration and the Politics of Methodology: Doing Fieldwork, Decentring Power, and Foregrounding Migrants' Perspectives*. Routledge. Link: <https://www.routledge.com/Migration-and-the-Politics-of-Methodology-Doing-Fieldwork-Decentring-Power-and-Foregrounding-Migrants-Perspectives/McAllister-Yoshimizu-Ahadi/p/book/9781032446967>
- McAllister, K., **Yoshimizu, A.** & Ahadi, D. 2025. *Migration and the Politics of Methodology Doing Fieldwork, Decentring Power, and Foregrounding Migrants' Perspectives*. London: Routledge. Link: https://www.routledge.com/Migration-and-the-Politics-of-Methodology-Doing-Fieldwork-Decentring-Power-and-Foregrounding-Migrants-Perspectives/McAllister-Yoshimizu-Ahadi/p/book/9781032446967?srsId=AfmBOorDwAZw8lxbQ9wMY9pCcteV_8a5Z8sY7UEgqdnCACxQe8u_SaSu
- Zeweri, H.** (2024). "Disciplining Subjectivity in Australian Migrant Deterrence Campaigns." *Journal of Refugee Studies*, 37(2): 534-551. Link: <https://doi.org/10.1093/jrs/feae033>

ACHIEVEMENTS

The following academic or creative achievements related to migration (e.g., awards, new grants, performances, etc.) were reported by CMS faculty affiliates for the 2024–25 academic year. Please note that this is not a comprehensive list.

IRENE BLOEMRAAD

- Joined the Statistics Canada Advisory Committee on Ethnocultural and Immigration Statistics (2025).

MARIA CERVANTES

- Selected for the Visiting Fellows Program 2025-2026 at the Center for U.S.-Mexican Studies (USMEX), University of California, San Diego

AMANDA CHEONG

- SSHRC Insight Grant. Topic: "Sons and Daughters of the Soil: The Making of Citizens and Stateless Persons in Post-Colonial Malaysia." Applicant with Jamie Liew (PI).
- SSHRC Insight Grant. Topic: "Mapping the Discursive and Institutional Landscape of 'Birth Tourism' and its Perceived Attack on Canadian Birthright Citizenship. Applicant with Megan Gaucher (PI), Yin-Yuan Chen, and Jamie Liew.
- Cheong, A. R. (2024). "Who Counts as a Stateless Person? Nation-Statist Logics and the Liabilities of Potential Citizenship Elsewhere." *Ethnic and Racial Studies* 48(4): 883-905. Received **ASA Theory Section Junior Theorist Award**, Honourable Mention, 2025 & **ASA Global & Transnational Sociology Section Best Scholarly Article Award**, Honourable Mention, 2025.

DAVID GREEN

- SSHRC Insight Grant (2024). Topic: Immigration, COVID, and Structural Change in the Canadian Labour Market. Co-applicant with Dr. Paul Beaudry.

MICHAEL HOOPER

- Salata Institute Seed Grant Program in Climate and Sustainability, Harvard University. Topic: "Adaptive Climate Migration: A Case Study of Resettlement from the Solomon Islands to Canada." Applicant with Dr. Hannah Teicher, Harvard University.

NEDA MAGHBOULEH

- Appointed as a new Canada Research Chair in Race, Ethnicity, Migration, and Identity (2024).

ANNE MURPHY

- SSHRC Partnership Development Grant (2024). Topic: "The Eradication of Caste: Building Community-University Partnerships for Change."

KASHIF RAZA

- SSHRC Knowledge Synthesis Grant 2025. Topic: "The Intersection of International Students, Housing, and Higher Education in Canada: Addressing Policy Gaps for Effective Governance Role." Co-Investigator with Dr. Hassan Bashir,

Assistant Professor, Carleton University (PI).

- **Digital Pedagogy Lab Grant**, UBC Edith Lando Virtual Learning Centre. Topic: "Digital Technology in Immigrant Training and Learning Role." Applicant with Dr. Hongxia Shan (Co-Applicant).
- **Distinguished Honouree for Postdoctoral Research Excellence**, Faculty of Education, University of British Columbia (2025)

AFSHAN PAARLBERG

- **Elite50 Award**, Indiana University Indianapolis (2025) Fulbright Research Award, U.S. Student Program, Institute of International Education (2024).

HONGXIA SHAN

- **SSHRC Partnership Development Grant** (2024). Topic: "Adult Learning and Education in Immigrant Settlement and Integration (ALE-in-ISI) Partnership." Co-applicant with Andreas Martin (Fern Universitat Hagen), Antony Chum (York University), Jude Walker (UBC), Shibao Guo (University of Calgary) and Thomas Sork (UBC).
- **Digital Pedagogy Lab Grant**, UBC Edith Lando Virtual Learning Centre, . Topic: "Digital Technology in Immigrant Training and Learning Role." Applicant with Dr. Kashif Raza (Co-Applicant).

HELENA ZEWERI

- **SSHRC Insight Development Grant** (2024). Topic: "The Colonial History and Present of Australia's Transnational Border Regime."

Appendix F: Media Coverage

Date	Title	Media outlet	CMS Affiliate
May 10, 2024	Understanding the rise in Indian permanent residents requires looking abroad and at home	<i>The Globe and Mail</i>	Antje Ellermann
May 30, 2024	International study cap: How some private companies are marketing tech and AI solutions	<i>The Conversation</i>	Lisa Ruth Brunner
July 13, 2024	Canada has finally started upending this two-step approach to immigration. We have questions	<i>The Toronto Star</i>	Lisa Ruth Brunner and Geraldine Pratt
July 24, 2024	What a second Trump presidency could mean for Canada's economy	<i>Business in Vancouver</i>	Irene Bloemraad
August 19, 2024	How a Kamala Harris presidency could affect Canada	<i>Business in Vancouver</i>	Irene Bloemraad
September 7, 2024	Migrant domestic workers in Hong Kong find emotional, creative outlet in poetry classes	<i>South China Morning Post</i>	Julie Ham
October 11, 2024	Ottawa's asylum seeker resettlement plan faces pushback in B.C. ahead of provincial election	<i>The Globe and Mail</i>	Daniel Hiebert
October 27, 2024	Canada's opinions about immigration are changing. What now?	CBC	Irene Bloemraad
October 30, 2024	U.S. election: How would Harris, Trump immigration plans impact Canada?	<i>Global News</i>	Irene Bloemraad
November 6, 2024	How could this Donald Trump presidency affect Metro Vancouver?	<i>Glacier Media</i>	Antje Ellermann
November 6, 2024	What Trump's proposed deportation policy could mean for Canada	BNN Bloomberg	Irene Bloemraad
November 6, 2024	UBC professor gives analysis into Trump's 2024 campaign and election victory	CBC	Irene Bloemraad
November 24, 2024	Migration experts scrutinize Justin Trudeau's explanation for immigration cuts	<i>The Conversation</i>	Lisa Ruth Brunner
December 16, 2024	How diverse is your neighbourhood? A new website shows how immigration to Canada has transformed our cities	<i>The Toronto Star</i>	Daniel Hiebert
January 9, 2025	Canada halts new parent immigration sponsorships, keeping families apart	<i>The Conversation</i>	Yue Qian
January 9, 2025	Undocumented in Canada, she's emerging from the shadows to fight for equal rights	CBC	Irene Bloemraad
January 19, 2025	There Is No Way to Retreat From the Risk of Wildfires	<i>The New York Times</i>	Kathryn McConnell

January 21, 2025	Lancement de l'offensive anti-immigration de Trump : Irène Bloemraad	<i>Radio Canada</i>	Irene Bloemraad
January 21, 2025	More people may flee to B.C. after Trump's immigration clamp down	<i>CBC</i>	Irene Bloemraad
January 21, 2025	Les mesures anti-immigration décrétées par Trump, quels impacts en C.-B.?	<i>Radio Canada</i>	Irene Bloemraad
January 28, 2025	Travailleurs sans papiers: un enjeu aussi au Canada	<i>Radio Canada</i>	Irene Bloemraad
February 4, 2025	What could future Canada-U.S. relations look like amid tariff talks?	<i>CBC</i>	Terri Givens
February 6, 2025	It's Black History Month. Let's Move Inclusion Beyond Visibility	<i>The Tyee</i>	Elizabeth Semowo
February 18, 2025	I Dared Defend Canada on X. The Response Was Chilling	<i>The Tyee</i>	Terri Givens
February 23, 2025	Report highlights systemic discrimination against International Medical Graduates in Canada	<i>Healthy Debate</i>	Kashif Raza
February 25, 2025	More than 230,000 Canadians sign petition to revoke Musk's citizenship	<i>The Washington Post</i>	Irene Bloemraad
March 12, 2025	B.C.'s Kwantlen Polytechnic University lays off 70 faculty members	<i>CBC</i>	Lisa Ruth Brunner
March 14, 2025	Are Canadians Safe Travelling to the US?	<i>The Tyee</i>	Lisa Ruth Brunner and Irene Bloemraad
April 3, 2025	Immigration Cuts Are Hurting Education in Small Communities	<i>The Tyee</i>	Lisa Ruth Brunner
April 23, 2025	Does the 'immigrant vote' exist? Experts don't think so	<i>City News</i>	Irene Bloemraad
April 24, 2025	How racialized voters are reshaping Canadian politics through digital networks	<i>The Conversation</i>	Kashif Raza
April 25, 2025	As Trump looms over Canadian elections, affordability a key factor	<i>Al Jazeera</i>	Irene Bloemraad
April 28, 2025	Immigration policy, once expected to be an election-defining issue, has fallen among voters' concerns	<i>The New York Times</i>	Antje Ellermann
May 5, 2025	Canada's medical system shuts out immigrant doctors, report reveals	<i>Canadian Immigrant</i>	Kashif Raza
May 15, 2025	Birthright citizenship is a basis for equality	<i>The University of British Columbia Magazine</i>	Irene Bloemraad and Amanda Cheong

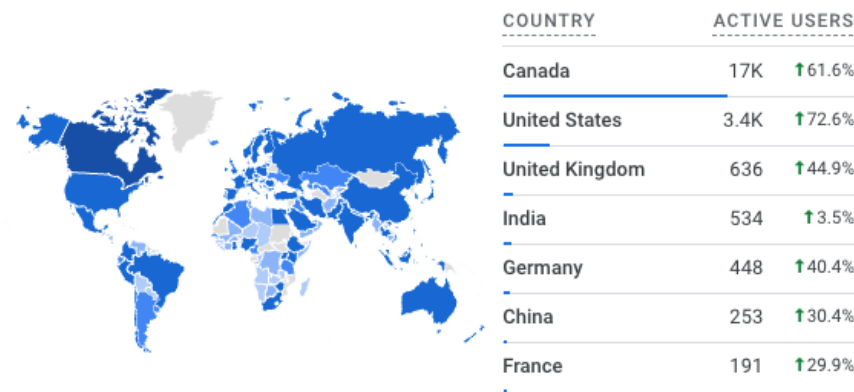
Appendix G: Digital Engagement

WEBSITE | WWW.MIGRATION.UBC.CA

The CMS website serves as a central hub for information about the Centre, offering news updates, event announcements, research projects, and details about affiliates and community partners. Between June 1, 2024, and June 1, 2025, the website attracted **26,741 unique users**, generating **87,322 page views**. Visitors primarily hailed from Canada, the United States, the United Kingdom, India, Germany, China, and France.



Acquisition overview
June 1, 2024 - June 1, 2025



Audience top countries
June 1, 2024 - June 1, 2025

SOCIAL MEDIA (as of June 2025)

In 2024–25, CMS continued to grow its online reach while adapting to a shifting social media landscape. We sunsetted our X (formerly Twitter) account in December 2024 and moved to Bluesky, where we have **547 followers**. We also launched an Instagram account, now at **394 followers**, to connect with students. Our LinkedIn audience continues to grow, reaching **2,227 followers** (a 128% increase since June 2024). These platforms help us share CMS research, events, and updates with wider and more diverse audiences.

NEWSLETTER

Our “Weekly Update” newsletter is sent to **724 subscribers** (as June 2025), including academics, graduate students, community partners, and policymakers. This newsletter highlights upcoming events, important announcements, and opportunities within and beyond CMS. It keeps stakeholders informed and engaged with the Centre’s activities. In 2024–25, CMS sent 47 issues from June 6, 2024 to May 29, 2025, with an average open rate of **63.03%** and an average click rate of **10.32%**.

Appendix H: Catalogue of Events

All events organized by the Centre for Migration Studies and its Research Groups unless otherwise noted.

1. JULY 22-AUG 1 | EXHIBITION | Weaving Belonging: Stories from Unceded Territories

This series of events and exhibitions with artist Aaniya Asrani focused on understanding our relationship to belonging on the unceded territories of the Musqueam, Squamish, and Tsleil-Waututh peoples as part of the CMS Belonging in Unceded Territory project. Events included a storytelling session, collaborative weaving activity, and a discussion on belonging. This project aims to center settler colonialism in discussions about social belonging in Vancouver. The event was hosted at Frog Hollow Neighbourhood House, and supported by CMS and others.

2. SEPT 16 | SPEAKER SERIES | Shades of Perception: Non-White Refugee Arrivals and Migration Policy Restrictiveness in the Global North with Andrew Rosenberg

The first lecture of the Speaker Series 2024-25 was given by Andrew Rosenberg, Associate Professor of Political Science at the University of Florida. His lecture focused on the differences in the treatment of displaced persons fleeing the Syrian civil war and those fleeing the 2022 Russian invasion of Ukraine. He argued that racial prejudice influences public attitudes and policy responses. Two tests revealed that non-white refugee arrivals prompt more restrictive policies and public support for such measures. Political media consumption moderates these effects. These findings have important implications for responses to future humanitarian crises.

3. SEPT 17 | WORKSHOP | Educate, Agitate, Organize: Trans/Queer/Caste with Anjali Arondekar

Anjali Arondekar is the Peggy and Jack Baskin Foundation Presidential Professor of Feminist Studies and founding Director of the Center for South Asian Studies at the University of California. Using the framework of caste abolition and queer/trans legal struggles in South Asia, this workshop offered potential pathways for radical trans/queer/caste futurites through a few main questions: Can an anti-caste movement politics found trans/queer histories? How has the escalation of authoritarianism and religious violence in South Asia impacted queer/trans/caste projects of dissent? What do trans/queer/caste movements teach us about navigating crisis amidst a climate of constant conflict? This event was presented by the Queer and Trans Anti-Fascisms Research Cluster, funded by the Public Humanities Hub, co-sponsored by CMS and others.

4. SEPT 18 | TALK | Archives of Dissent: Sexuality, Caste, History with Anjali Arondekar

Following her workshop, Anjali Arondekar gave a talk suturing histories of caste and sexuality to histories of dissent in South Asia. The talk rearranged the grammar of our ethical engagements with the past and present, presenting the historical vernaculars -the data- that found the evidentiary regimes of rights and representation for subaltern subjects. Anjali offered figurations of andolan/protest, meditations that move between the heady inspirations of dissent and the stultifying violence of state practices, and invited attendees to imagine such an historical andolan together. This was the first Noted Scholars Series event for the Institute for Gender, Race, Sexuality and Social Justice (GRSJ), co-sponsored by CMS and others.

5. SEPT 19 | TALK | Re-Framing Disaster Narratives around Haiti with Cécile Accilien

Dr. Accilien, Professor of French and Francophone Studies at the University of Maryland, spoke on the complexity around simplistic disaster narratives surrounding Haiti by providing historical and cultural context. It further

considered how ensekirite in its various forms (physical, economic, emotional, psychological and structural), in addition to colorism, gender, class prejudice and ineffective aid, help maintain narratives of crisis and a failed state. The talk was part of UBC FHIS Research Seminar Series and co-organized by the CMS Circulation: Africa and its Diasporas Research Group and the UBC Latin American Landscape Cluster.

6. SEPT 24 | Community Luncheon

Community Luncheons are our regular lunch-time networking events for CMS faculty, students, staff, visiting scholars, community partners, and interested newcomers. They offer an ongoing opportunity to gather and re-connect face-to-face as well as to meet new colleagues and friends.

7. OCT 2-3 | WORKSHOP | The Connected Past: A Workshop in Network Science for Humanities Students

This two-day training session in network science, organized by the CMS Mobilities Research Group, was run by members of The Connected Past (TCP), an international research community dedicated to the study of network science and theory in archaeology and history. Speakers were Tom Brughmans and Paula Gheorghiade. It was designed to equip humanities graduate students with the ability to critically evaluate existing network research and empower students to work across disciplinary skillsets.

8. OCT 28 | SPEAKER SERIES | Suspect Citizenship: Rethinking Belonging and Non-belonging in Plural Societies with Jean Beaman

Based on years of ethnographic research on France's present antiracist movement and mobilization against state violence, Jean Beaman, Associate Professor of Sociology at the Graduate Center of CUNY and the University of California, introduced a framework of "suspect citizenship," which demonstrates how ethnoracial minorities are constantly outside of the boundaries of full societal inclusion. She argued that postcolonial plural societies like France position certain populations as suspect or suspicious due to their ethnoracial assignment and explained suspect citizenship as a framework and mode for understanding and making sense of how colonial hierarchies are maintained in postcolonial or neocolonial societies.

9. OCT 28 | WORKSHOP | Ethnographic Narrative with Jean Beaman

Following Dr. Beaman's Speaker Series lecture, she hosted a conversation on the theme of "ethnographic narrative." The workshop included a Q&A with Dr. Beaman on her career trajectory and experiences with the practice of ethnography, and a sharing of works-in-progress ethnographic sketches provided by Dr. Beaman and Dr. Cheong.

10. OCT 31 | Welcoming Together: Musqueam-YVR Collaboration on Refugee Reception with Elder Mary Point

This discussion was organized by the CMS Migration & Indigeneity Research Group to explore partnerships in refugee reception on unceded territories. Elder Mary Point from the x^wməθk^wəyəm (Musqueam) community and Director of Indigenous Relations at Vancouver International Airport (YVR), presented the cooperation between Musqueam elders and YVR in welcoming refugees arriving at the airport.

11. NOV 6 | PANEL DISCUSSION | The Crash of the International Student 'Market': Causes, Consequences, and the Future of Canadian Higher Education

Moderated by Sharon Stein, speakers Kumari Beck, Dale McCartney and Lisa Brunner discussed the impact of recent policy changes on international students in Canada and how they intersect with colonial dynamics and the future of

higher education. This virtual panel aimed to offer a more critically engaged and complexity informed response to recent policy changes by situating them within the colonial dynamics that have long structured Canada's approach to international students. Panelists also considered how policy shifts might shape the future of higher education as we face financial austerity, political polarization, and shifting migration patterns due to conflict and climate change. This event was co-sponsored by the Critical Internationalization Studies Network, the Simon Fraser University Center for Research on International Education, the UBC Faculty of Education Professor of Climate Complexity and Coloniality, and CMS.

12. NOV 13 | PANEL DISCUSSION/WORKSHOP | CMS-Sector Research Collaborations Day

The event was designed to bring together migration researchers and professionals in the immigration and settlement field to consider migration research through a decolonial lens and build mutually beneficial connections. The morning session featured a panel presentation and moderated discussion with guest speakers Atlanta-Marinna Grant, Harald Bauder and Sandeep Agrawal. They explored the critical questions and paradoxes that arise when trying to engage in decolonizing actions while navigating Eurocentric systems. The afternoon session showcased ways it can support the sector's research needs, followed by a Speed Networking activity for participants to connect, share ideas, and explore potential research collaborations. This event was hosted by CMS, AMSSA and UBC Connects, and organized in partnership with Migrant Integration in the Mid-21st Century: Bridging Divides.

13. NOV 19 | Community Luncheon

Community Luncheons are our regular lunch-time networking events for CMS faculty, students, staff, visiting scholars, community partners, and interested newcomers. They offer an ongoing opportunity to gather and re-connect face-to-face as well as to meet new colleagues and friends.

14. NOV 22 | BOOK DISCUSSION | *Ingat: An Anthology by Migrant Domestic Worker Creatives in Hong Kong*

This community book talk featured editors and migrant worker creatives from Hong Kong including Julie Ham (Brock University/CMS Visiting Scholar), Maria Nemy Lou Rocio (Migrant Workers of Hong Kong), Christine Vicera (Be/longing), and Yvone Yevan Yu (Hong Kong Baptist University). It was co-organized by the Centre for South East Asian Research at UBC and CMS.

15. NOV 27 | TALK | *Why Do Chinese Women Seek Western Men? The Case of China's Email-Order Brides* with Dr. Monica Liu

Based on 17 months of ethnographic research at three online dating agencies in southern China, Monica Liu's study explores the life histories and decision-making processes of predominantly middle-aged, divorced women from various socio-economic backgrounds as they seek marriage with Western men. By comparing women's perspectives across different class backgrounds, the study reveals how their social positions and access to resources shape their visions of Western men. This event was co-organized by the CMS Mobilities Research Group and the Department of Asian Studies at UBC.

16. NOV 29 | EXHIBITION | *Collective Action: Global to Local Voices of People Living with HIV*

This event was hosted to commemorate World AIDS day. The knowledge sharing and photovoice exhibition displayed voices of people living with HIV. Dr Karun Karki (Associate Professor, Social Work) and Dr Rita Dhungel (Assistant Professor, Social Work) hosted this event. It was co-sponsored by the School of Social Work and CMS.

17. DEC 2 | GRADUATE CERTIFICATE PROGRAM EVENT | Professional Development Event with Patrick MacKenzie

Patrick Mackenzie, CEO of the Immigrant Employment Council of BC, shared his journey in migration work, highlighting real-world applications, challenges, and career paths beyond academia. He has worked in policy and program areas aimed at supporting many of Canada's most vulnerable communities through economic and social development as well as international relations. Patrick has worked with partners on matters affecting Indigenous and immigrant populations, including immigrant economic integration, provincial nominee programs, credential recognition and labour mobility. This event was organized as part of the CMS Graduate Certificate in Migration Studies.

18. JAN 16-MARCH 27 | LECTURE SERIES | Games & Social Justice Lecture Series

This series of nine speaker events examined the intersections between digital and analog gaming cultures and the work of social justice. Speakers explored various approaches to video games, tabletop games, and tarot including game design, game play, and fan cultures. They examined how gaming cultures perpetuate bias, prejudice, and problematic power dynamics, but are capable of intervening in discourses of oppression, heteronormativity, and settler colonialism. This programming was co-sponsored by the UBC Popular Media for Social Change Research Excellence Cluster, CENES, the Waterloo Centre for German Studies, German Studies Canada, UBC Comics Studies Cluster, the UBC Centre for European Studies, and CMS.

19. JAN 27 | WORKSHOP | Media Training

CMS' first Media Training Workshop was led by Sachintha Wickramasinghe, Media Relations Specialist at UBC. It was designed to help faculty and graduate students affiliated with CMS build confidence in responding to media inquiries through introducing UBC Media Relations, its role in promoting research, and the basics of effective media engagement. The workshop covered the media's role in shaping migration narratives and public discussions; practical tips for engaging with journalists across radio, TV, and print, including understanding their priorities and deadlines; and strategies for crafting key messages, handling tricky questions, and navigating controversial topics with confidence.

20. JAN 28 | Community Luncheon

Community Luncheons are our regular lunch-time networking events for CMS faculty, students, staff, visiting scholars, community partners, and interested newcomers. They offer an ongoing opportunity to gather and re-connect face-to-face as well as to meet new colleagues and friends.

21. JAN 29 | TALK | Soirée avec Jo Güstin

Jo Güstin is an author, comedian, producer, and essential voice of the contemporary queer and feminist scene. She hosted an evening combining humor, intersectional feminism, and bold artistic creations. Her journey has taken her from Cameroon to Toronto, via France, Germany, and Japan. She uses fiction and caustic humor to deconstruct gender, race, and sexuality norms, celebrating African queer narratives. This event was co-sponsored by the Centre for Francophonie and the CMS Circulation: Africa and its Diasporas Research Group.

22. FEB 10 | SPEAKER SERIES | Organizing for Inclusion? Race-Making and the Quest for Immigrant Rights in the U.S. South with Jennifer A. Jones

Jennifer A. Jones is an Associate Professor of Sociology at Northwestern University and her research lies at the intersection of the sociology of race, immigration, and politics. Her presentation discussed how, in recent decades, immigrant-serving organizations have emerged as crucial lifelines for immigrants and have become increasingly central players in immigration politics. While researchers have studied these organizations' role in individual and policy outcomes, less attention has been paid to their role in shaping racial formation processes. Drawing on archival, ethnographic, and interview data, this project delves into the organizing efforts of groups across the U.S. South. Focusing on two key cases, she shows how organizations mobilize race in their work, affecting both the racialization of new immigrant arrivals and macro-level public policies.

23. FEB 10 | WORKSHOP | Race and Migration Studies: A Research Journey with Jennifer A. Jones

Following Dr. Jones' CMS Speaker Series lecture, she held an engaging workshop on race and migration. Throughout her scholarship, she examines how race "works", exploring the relationship between categorical ascription and meaning-making. She reflected on the evolving scholarship on race and immigration, drawing on her research and personal experiences from student to prize-winning author.

24. FEB 11 | TALK | A Theory of Immigration Policy: The Insulation Logics of Policy Arenas

Dr. Antje Ellermann, CMS Co-Director, presented the first talk in the ALE-in-ISI Speaker Series. This talk presented a theoretical framework for the comparative analysis of the political dynamics shaping immigration policy. This event was presented by Adult Learning and Education in Immigrant Settlement and Integration (ALE-in-ISI), and co-sponsored by CMS.

25. FEB 22-23 | WORKSHOP | 1947 Canonizing Partition: Re-thinking Methodology in Partition Studies

This workshop brought together scholars and artists to explore innovative methodologies and historiographical approaches in Partition Studies. Through interdisciplinary presentations, it examined memory, ethics, narrative, material culture, overlooked communities, and the role of digital tools in shaping how Partition has been studied, remembered, and taught. The workshop was organised by the Mushtaq Ahmad Gurmani School of Humanities and Social Sciences (MGSHSS), LUMS, in collaboration with CMS and the Department of History, University of British Columbia (UBC), Canada, and Royal Holloway, University of London, UK, with support from the Social Sciences and Humanities Research Council of Canada. It was organized by Dr. Anne Murphy (UBC), Dr. Sarah Ansari (Royal Holloway), and Dr. Nadhra Shahbaz Khan (LUMS).

26. FEB 24 | GRADUATE CERTIFICATE PROGRAM EVENT | Professional Development Event with Zahra Esmail

Zahra Esmail shared his journey in migration work, highlighting real-world applications, challenges, and career paths beyond academia. Zahra is the CEO of Vantage Point, a non-profit focusing on strengthening organizations' capacity across BC. With over 15 years of experience in the non-profit sector, she has worked in international development, housing and homelessness, community development, microfinance, governance, and leadership. Zahra volunteers actively, serving as Co-Chair of the Fresh Roots Urban Farm Society Board and Chair of the Board Governance Committee of Cuso International. She also leads BC's Poverty Reduction Advisory Committee. She is recognized as one of Business in Vancouver's Forty Under 40 (2019) and a YWCA Women of Distinction nominee (2022). This event was organized as part of the CMS Graduate Certificate in Migration Studies.

27. FEB 28 | BOOK TALK | Insurgent Communities: How Protests Create a Filipino Diaspora, Dr. Sharon Quinsaat

Sharon Quinsaat is a scholar of social movements and migration and currently Associate Professor of Sociology at Grinnell College. In this book, she shed new light on the formation of diasporic connections through transnational protests. In *Insurgent Communities*, Quinsaat explains the dynamic process through which a diaspora is strategically constructed. She looks to Filipinos in the United States and the Netherlands to argue that diasporas emerge through political activism. Social movements provide an essential space for addressing migrants' diverse experiences and relationships with their homeland and its history. A significant contribution to the interdisciplinary field of migration and social movements studies, *Insurgent Communities* illuminates how people develop collective identities in times of social upheaval. This event was organized by the CMS Borders Research Group.

28. MAR 3 | SPEAKER SERIES | "Otherness" and the Politics of Sanctuary: Exploring the History of Refuge Over the Long Twentieth Century with Laura Madokoro

Laura Madokoro, Associate Professor in the Department of History at Carleton and UBC alumnus, gave a talk drawing from her new book, *Sanctuary in Pieces: Two Centuries of Flight, Fugitivity, and Resistance in a North American City*. She discussed that, in recent months, the simmering anti-immigrant discourse in North America has become more pronounced. Central to this discourse has been profound othering, scaffolded by words such as "undocumented," "illegal," and "criminal aliens." The ease with which this language has gained traction serves as an invitation to consider the ways in which understandings of the relationship between migration, race, and refuge have been reformulated in recent years. Dr. Laura Madokoro offered a timely exploration of the politics of otherness as seen in the search, offer, and refusal of sanctuary over the long twentieth-century.

29. MAR 7 | TALK | The Comparative Politics of Immigration Policy in Canada & Germany

Dr. Antje Ellermann, CMS Co-Director, presented the second talk in the ALE-in-ISI speaker series on Migration & Adult Education. This talk examined the contrasting political dynamics underlying immigration policy development in Germany and Canada. This event was presented by Adult Learning and Education in Immigrant Settlement and Integration (ALE-in-ISI), and co-sponsored by CMS.

30. MAR 7 | WORKSHOP | Analyzing Text Data with DiscoverText

Led by Dr. Stuart Shulman, founder and CEO of Textifter, and inventor of DiscoverText, this workshop enabled participants to learn to use DiscoverText, a multilingual-capable web-based platform for categorizing text data. The platform runs through a graphical user interface, so no statistical or software programming is required. The workshop taught participants how to use DiscoverText to label data to build custom machine classifiers from large scale survey responses, RSS feeds, Twitter/X, or any other digitized text and metadata. Dr. Shulman gave examples of Twitter/X datasets from tweets relevant to Canada on immigration and other timely topics.

31. MAR 17 | WORKSHOP | Cartooning Workshop with Quan Zhou

This workshop was led by artist, graphic novelist, and 2025 Premio Princesa de Girona Arte winner, Quan Zhou Wu. This event was co-sponsored by UBC FHIS, UBC Comics Studies Cluster, UBC English Language and Literatures, and CMS.

32. MAR 31 | GRADUATE CERTIFICATE PROGRAM EVENT | Professional Development Event with Lily Grewal

Lily Grewal shared her journey in migration work, highlighting real-world applications, challenges, and career paths

beyond academia. She has over 20 years of community and government experience. As the Director of Immigrant Integration, she oversees the Province's funded services and supports for newcomers. She has worked in the field of immigration with the Province and enjoys working closely with partners to spearhead complex programs and initiatives that enhance programs and services for BC newcomers. Lily holds a BA from UBC, a MSW from the University of Toronto and is an accredited corporate Chartered Director. This event was organized as part of the CMS Graduate Certificate in Migration Studies.

33. MAR 31 | TALK | White Columns on Turtle's Back: Classics, Colonialism and Postcolonial Theory Here and Now with Dr. Katherine Blouin

Dr. Katherine Blouin has a PhD in Roman History and a Postdoctoral Diploma in Greek Papyrology. Her work centres on socio-economic and environmental history. In this talk, Dr Blouin discussed what it means to do Classics right now on what many Indigenous Nations call Turtle Island. She shared some of the things she has (un)learned while co-editing the 2024 Handbook of Classics, Colonialism, and Postcolonial Theory, and by reflecting on what moral and public paths currently offer themselves to Classics and Antiquity fields practitioners. This event was co-organized by the CMS Mobilities Research Group and the Department of Ancient Mediterranean and Near Eastern Studies at UBC.

34. APR 3 | Community Luncheon

Community Luncheons are our regular lunch-time networking events for CMS faculty, students, staff, visiting scholars, community partners, and interested newcomers. They offer an ongoing opportunity to gather and re-connect face-to-face as well as to meet new colleagues and friends.

35. APR 16 | PANEL DISCUSSION | From Policy to People: Unpacking the Immigration Landscape in Unsettled Times

Moderator Dr. Kamal Al-Solaylee was joined by speakers Dr. Irene Bloemraad, Dr. Thomas Lemieux and Lenya Wilks to explore immigration from multiple angles—policy, economics, and lived realities. This timely discussion, drawing on academic research and community-based experience, dove into real-world impacts on migrants and local communities in today's unsettled political and economic times. They discussed where Canada and B.C. stand on immigration in 2025; how policy changes in Canada and beyond impact communities, jobs, and the economy; and the challenges newcomers face, and how we can create a more inclusive future. This event was presented in partnership with Stone Centre for Wealth and Income Inequality and hosted by the Faculty of Arts.

36. APR 18-19 | TEACH-IN | The Long Arc Of Fascism: An Action-Oriented Teach-In

This event included two dynamic in-person events where speakers guided participants through the historical roots and contemporary manifestations of fascism, sparking discussions on how we can combat its rise through collective action. The event was hosted by Naomi Klein of UBC's Centre for Climate Justice, Adel Iskandar of SFU's Centre for Comparative Muslim Studies, and Sundance Chief Rueben George of the Tsleil-Waututh Nation. The first event, titled Palestine as Paradigm, featured a keynote from Sherene Seikaly (UC Santa Barbara). The second day, titled The Long Arc Of Fascism: How We Got Here – and How We Get Out, was an inspiring community teach-in about the wreckage of history and still possible futures. This event was presented by UBC Centre for Climate Justice, and was co-sponsored by CMS and others.

37. APR 24 | PANEL DISCUSSION | Revisioning Newcomer Settlement and Integration from the Ground Up

Moderator Katie Crocker (CEO, AMSSA), was joined by speakers Afshan Paarlberg (Visiting Scholar, CMS), Lizeth Escobedo (Director of Newcomers and Youth Services, YMCA BC), Patrick MacKenzie (CEO, IEC-BC) and Neelam Sahota (CEO, DIVERSEcity), bringing together four different perspectives on the future of settlement and integration in Canada to spur creative, big-picture, forward-thinking responses. Shifting public opinion, reduced immigration levels, and unpredictable funding structures are impacting the settlement and integration of Canada's newcomers during a time of both domestic and geopolitical uncertainty. Given these challenges, they discussed what it would take to collectively envision a more robust and secure newcomer settlement and integration sector. This event was presented in partnership with AMSSA and co-sponsored by Migrant Integration in the Mid-21st Century: Bridging Divides.

38. MAY 1-2 | ANNUAL RESEARCH CONFERENCE 2025 | Migration, Mobilities, and Changing Political Landscapes

The CMS Annual Research Conference was hosted at the xʷəθəθiqəṭəm (Place of Many Trees), Liu Institute for Global Issues, bringing together scholars and practitioners to examine the complex dynamics of migration and mobility in our interconnected world. The 2025 theme, Migration, Mobilities, and Changing Political Landscapes, explored how evolving political contexts influence migration patterns, policies, and lived experiences. The conference featured five thematic panels and a roundtable on policy-engaged research. The keynote film screening *Where We Stand* included multimedia presentations from film participants. It was led by Dr Cyrus Sundar Singh with Canada Excellence Research Chair in Migration and Integration at Toronto Metropolitan University. This event was presented in partnership with UBC Okanagan and Migrant Integration in the Mid-21st Century: Bridging Divides.

39. MAY 29 | Migration Data Challenge 2025: Final Showcase

The Migration Data Challenge comprised of 25 student teams from Toronto Metropolitan University, the University of Alberta, and the University of British Columbia. They each had one week to analyze migration data from Statistics Canada and generate new insights into disparities in access to services and opportunities. The showcase included presentations by the 10 semi-finalist teams; commentary and feedback from the expert judging panel; live voting for the Audience Choice Award; announcement of four winning teams; and a total of \$10,000 in prize money, sponsored by the Master of Engineering Innovation and Entrepreneurship program at Toronto Metropolitan University. This event was presented by Migrant Integration in the Mid-21st Century: Bridging Divides and hosted by the Toronto Metropolitan University.

Acknowledgments

This Annual Report was prepared by **Marie Frileux**, Communication Specialist at the UBC Centre for Migration Studies, in collaboration with the CMS leadership, staff, affiliates, and Graduate Academic Assistants. We extend our thanks to everyone who contributed their time, insights, and expertise.



THE UNIVERSITY OF BRITISH COLUMBIA

Centre for Migration Studies

The University of British Columbia
Vancouver Campus | x^wməθk^wəyəm (Musqueam) Territory
C.K. Choi - 1855 West Mall, Room 324
Vancouver, BC | V6T 1Z2 Canada

www.migration.ubc.ca